

8. TRANSPORT & COMMUNICATION

	2016	2017	2018
Length of Road (Kms.)	403	449	650
Dzongkhag Roads	53	143	143
Thromde Roads	3	3	3
Gewog Connectivity Roads	53.0	143.2	143.2
Farm Roads	321	353	361
Forest Roads	0	0	0
Motorable Bridges (Nos.)	19	20	20
Non-Motorable Bridges (Nos.)	11	11	11
Telephone Connections (Nos.)	450	415	180
Internet Lease Line Connections (Nos.)	...	135	150
Internet Broadband Connection (Nos.)
Cable TV operators	2	2	2
Taxis (Nos.)	3	3	3
Buses Operating (Nos.)	0	1	1

9. TRADE & INDUSTRIES (Nos.)

	2016	2017	2018
Trade, Hotels and restaurants	138	138	138
Industries	58	57	59
Constructions	...	52	53

10. TOURISM (Nos.)

	2016	2017	2018
Tourists visited	68	63	71

11. ELECTRICITY

	2016	2017	2018
Households Electrified (%)	99.2	99.5	99.8
Units Consumed (MU)

12. RELIGION & CULTURE (Nos.)

	2016	2017	2018
Religious Institutions	2	2	2
Religious Monuments (only lhakhang)	121	121	121

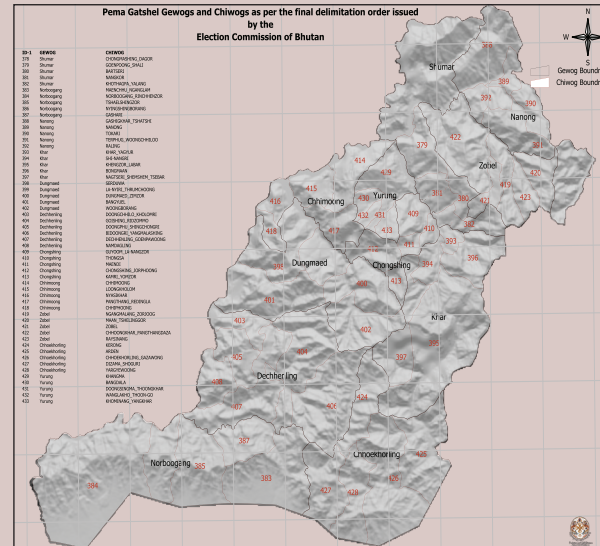
13. PUBLIC FINANCE -Financial Year (Mill. Nu.)

Budget Outlay (12FYP 2018-2022)

Current	...
Capital	949.61

Expenditure

	2016/17	2017/18	2018/19
Current	400.578	401.719	359.122
Capital	300.302	256.998	91.473



Statistics Office
Dzongkhag Administration
Pemagatshel

www.pemagatshel.gov.bt



PEMAGATSHEL Dzongkhag at a Glance 2019

1. GENERAL

Geographical Characteristics

	2019
Area (sq. km)	1022
Altitude (masl.)	445-3000+
Administrative Tiers (Nos.)	
Dungkhags	1
Gewogs	11
Chiwogs	56
Villages	208
Household	6075
Institutional Household	108
Gungtong as per PHCB 2017	849

2. POPULATION

	2019
Total	23713
Male	11957
Female	11756
Population density (per sq. km)	23.203

3. POVERTY RATE (TERMINAL)

Consumption Poverty Rate (2017)	26.9
Multi-dimensional Poverty Rate (2012)	11.6
GNH Index	0.77
Monthly Household Income (Average)	12901

4. HEALTH

Infrastructure (Nos.)	2017	2018	2019
Hospitals	1	1	1
Indigenous Units	4	4	4
Basic Health Units (BHUs)			
BHU I	1	1	1
BHU II	11	11	11
Sub-post	7	7	7
Outreach Clinics			
With Sheds	32	32	32
Without Sheds	4	4	4
Ambulance	5	6	7

Health Personnel (Nos.)	2017	2018	2019
Doctors	2	2	3
Dungtshos (Indegenious Doctor)	1	1	1
Sowai Menpa (Indegenious Medical Technicians)	4	4	4
Nurses	12	15	16
Technicians	20	20	21

Health Indicators	2016	2017	2018
Infant Mortality (in number)	6	11	7
Crude Birth Rate (Per 1,000 population)	20.4	17	13

Crude Death Rate (Per 1,000 population)	5.2	5	6
Maternal Mortality Rate (%)	2	0	0
Doctors per bed	10	6	23
Birth attended by trained personnel (%)	75	80	90
Under one immunization coverage (%)	100	100	100
Sanitation	2016	2017	2018
Rural water supply coverage (%)	100	100	100
Rural population access to safe drinking water supplies (%)	97	97	98
Rural population access to improved sanitation (%)	98	98	99

5. EDUCATION

Number of educational institutes (Includes pvt. Nos) 2015 2016 2017

Tertiary Institute under RUB			
Central Schools	1	4	4
Higher Secondary Schools	2	0	0
Middle Secondary Schools	2	1	1
Lower Secondary Schools	5	3	3
Primary Schools	14	15	14
Extended Class Room	10	10	9
Non Formal Education Centres (NFE)	63	61	48
Early Child Care and Development Centres	8	10	12

Other Institutes (Includes special institutes, vocational institutes & sankrit patshala)

	0	0	0
--	---	---	---

Educational Indicators

(Includes private schools)	2017	2018	2019
School enrolment (Nos.)	5,801	5,926	5,617
Male	2,923	2,936	2,892
Female	2,878	2,990	2,725
Teachers (Nos.)	331	339	349
Male	245	264	251
Female	86	76	99
Pupil-teacher Ratio	17.526	17	16
NFE Instructors	61	39	32
Male	13	9	9
Female	48	30	23
NFE learners (Nos.)	501	441	314
Male	411	55	34
Female	90	356	280
Literacy rate	...	62.9	62.9

6. AGRICULTURE

Land Registration by Type	2016	2017	2018
Dry land (acres)	11890	10700	10700
Wet land (acres)	356	356	356
Orchard (acres)	2335.4	2335.4	2335.4
Irrigation channels (kms)	25.07	25.07	25.07
Functional	1.94	1.94	1.94
Non- functional	23.13	23.13	23.13
Power tillers (Nos.)	42	53	52
Agriculture Extension Centres	11	11	11
Agriculture Seed Production Farms	0	0	0
Electric fencing (Nos.)	8	14	27
Electric fencing (kms.)	26	47.22	87.6
Farm sales shops (Nos.)	8	11	11

Renewal Natural Resources

(RNR)	2015	2016	2017
RNR extension Centres (Nos.)	11	11	11

Livestock (Nos.)

	2015	2016	2017
Veterinary Hospitals	1	1	1
Livestock Extension Centres	11	11	11
Regional Veterinary Laboratories (RLDC)	0	0	0
Bio-gas plants	187
Fishery Farms (group)	2	3	3
Poultry farms (group)	26	28	28
Milk processing unit	5	5	5
Piggery farms (group)	14	19	19

Forestry

	2017	2018	2019
Territorial Division HQs	0	0	0
Range Offices	2	2	2
Beat Offices	3	3	3
Community Forest (acres)	6439.93
Nursery (Nos.)	4	4	4
Forest Cover (%)	87.7	87.7	87.7
Protected Areas (Sq.Km)	1.636	1.636	1.636

7. EMPLOYMENT

	2015	2016	2018
Labour Force (Nos.)	15266	13412	17,043
Male	7862	6998	8,366
Female	7404	6414	8,677
Un-employed (Nos.)	26	97	0
Population Involved in Agriculture (%)	72	67.8	40
Un-Employment Rate	1	0.9	0.4
Labour Force Participation Rate	63.4	67.7	65.0