

8. TRANSPORT & COMMUNICATION

Length of Road (Kms.)	2015	2016	2017
Dzongkhag Roads	54.500	54.500	54.500
Thromde Roads	281.800	281.800	281.800
Gewog Connectivity Roads	16.730	27.730	27.730
Farm Roads	82.050	82.050	86.050
Forest Roads
Motorable Bridges (Nos.)	16	16	16
Non-Motorable Bridges (Nos.)	61	65	66
Telephone Connections (Nos.)	540	810	800
Internet Lease Line Connections (Nos.)
Internet Broadband Connection (Nos.)
Cable TV operators	2	2	2
Taxis (Nos.) ¹	2,604	2,764	2,841
Buses Operating (Nos.) ¹	186	207	331

Note : ¹RSTA data covering the five western Dzongkhags.

9. TRADE & INDUSTRIES (Nos.)

	2015	2016	2017
Trade, Hotels and restaurants etc. (Services)	1,246	1,015	1,331
Industries	27	38	53
Contract firms	95	64	70

10. TOURISM (Nos.)

	2015	2016	2017
Tourists visited	46,875	53,454	59,164

11. ELECTRICITY

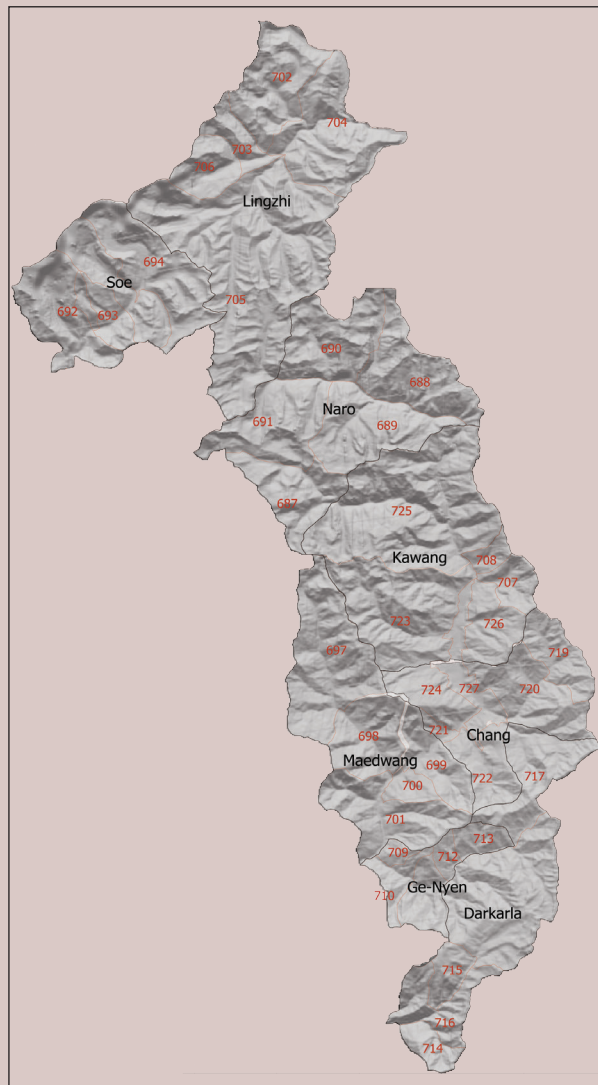
	2015	2016	2017
Households Electrified (%)	100.0	100.0	100.0
Units Consumed (MU)

12. RELIGION & CULTURE (Nos.)

	2016	2017	2018
Religious Institutions	92	92	92
Religious Monuments	353	353	353

13. PUBLIC FINANCE-Financial Year (Mill. Nu.)

	10 th Plan	11 th Plan	12 th Plan
Budget Outlay	185.560	423.650	-
Current	-	-	-
Capital	185.560	423.650	-
Expenditure	2015/16	2016/17	2017/18
Current	345.899	387.821	289.298
Capital	196.412	249.012	182.160
Capital	149.487	138.809	107.140



National Statistics Bureau

Post Box No. 338, Thimphu : Bhutan

Tel: +975-2-333296/325402/322753 Fax: +975-2-323069 www.nsb.gov.bt

ISBN 978-99936-28-39-2

Data source: Dzongkhag Statistics Section



THIMPHU

Dzongkhag at a Glance

2018

1. GENERAL

Geographical Characteristics

	2018
Area (sq. km)	1,795.87
Altitude (masl.)	2,330

Administrative Tiers (Nos.)

	2018
Dungkhags	1
Gewogs	8
Chiwogs	40
Villages	196
Gungtong	5

2. POPULATION

	2017
Total	24,185
Male	13,526
Female	10,659
Population density (per sq. km)	13

3. POVERTY RATE (TERMINAL)

	As per PAR 2017
Consumption Poverty Rate (%)	1.1
Multi-dimensional Poverty index (%)	0.009

4. HEALTH

Infrastructure (Nos.)	2016	2017	2018
Hospitals	1	1	1
Indigenous Units	1	1	1
Basic Health Units (BHUs)			
BHU I	1	1	1
BHU II	7	7	7
Outreach Clinics			
With Sheds	7	6	7
Without Sheds	1	1	1
Ambulance	1	1	1

Health Personnel (Nos.)

	2016	2017	2018
Doctors	3	3	4
Dungtshos (Indegenious Doctor)	0	0	1
Sowai Menpa (Indegenious Medical Technicians)	2	1	1
Nurses	16	15	24
Technicians	9	14	16

Health Indicators

	2015	2016	2017
Infant Mortality Rate (Per 1,000 live births)	9.7	6.9	5.1
Crude Birth Rate (Per 1,000 population)	14.9	10.4	8.2

Crude Death Rate (Per 1,000 population)	1.4	1.5	1.3
Maternal Mortality Rate (%)	0	0	0
Doctors per bed	26	26	20
Birth attended by trained personnel (%)	99.3	98.0	98.5
Under one immunization coverage (%)	94.5	95.0	96.5

Sanitation

	2015	2016	2017
Rural water supply coverage (%)	99.7	99.3	100.0
Rural population access to safe drinking water (%)	97.4	97.0	100.0
Rural households with improved sanitation facility (%)	97.8	98.3	95.9

5. EDUCATION

Number of educational institutes (Includes pvt. Nos)

	2016	2017	2018
Tertiary Institute under RUB	0	0	0
Central Schools	1	1	1
Higher Secondary Schools	1	1	1
Middle Secondary Schools	2	2	3
Lower Secondary Schools	1	1	0
Primary Schools	6	6	6
Extended Class Room	2	2	2
Non Formal Education Centres (NFE)	5	8	7
Early Child Care and Development Centres	7	8	9
Other Institutes(Includes special institutes, vocational institutes & sankrit patshala)

Educational Indicators (Includes private schools)

	2016	2017	2018
School enrolment (Nos.)	3,327	3,719	4,011
Male	1,625	1,823	1,937
Female	1,702	1,896	2,074
Teachers (Nos.)	210	231	233
Male	129	133	132
Female	81	98	101
Pupil-teacher Ratio	16	16	17
NFE Instructors	8	8	7
Male	6	4	4
Female	2	4	3
NFE learners (Nos.)	102	119	110
Male	68	68	67
Female	34	51	43

6. AGRICULTURE

Land Registration by Type

	2015	2016	2017
Dry land (acres)	2,880.03	2,880.03	2,880.03
Wet land (acres)	799.53	799.53	799.53
Orchard (acres)	638.71	638.71	638.71
Irrigation channels (kms)			
Functional	48.000	54.000	54.000
Non- functional	0	0	0
Power tillers (Nos.)	99	104	104
Agriculture Extension Centres	1	1	1
Agriculture Seed Production Farms	0	0	0
Electric fencing (kms.)	47.790	100.269	123.560
Farm market sheds (Nos.)	33	40	42

Renewal Natural Resources (RNR)

	2016	2017	2018
RNR extension Centres (Nos.)	5	5	5

Livestock (Nos.)

	2016	2017	2018
Veterinary Hospitals	1	1	1
Livestock Extension Centres	3	3	3
Regional Veterinary Laboratories (RLDC)	0	0	0
Fishery Farms	0	0	0
Poultry farms	12	50	50
Milk processing unit	1	1	1
Piggery farms	2	9	10

Forestry

	2016	2017	2018
Territorial Division HQs	1	1	1
Range Offices	4	4	4
Beat Offices	3	3	3
Community Forest (acreas)	6,775.4	6,775.4	6,775.4
Nursery (Nos.)	2	2	2
Forest Cover (%)	64.3	64.3	64.3
Protected Areas (areas)	846	846	846

7. EMPLOYMENT

	2014	2015	2016
Labour Force (Nos.)	41,801	41,989	45,651
Male	25,078	26,469	26,976
Female	16,723	15,520	18,675
Un-employed (Nos.)	3,655	3,818	...
Population Involved in Agriculture (%)
Un-Employment Rate	8.0	8.3	...
Labour Force Participation Rate	58.0	55.5	...