

8. TRANSPORT & COMMUNICATION

	2014	2015	2016
Length of Road (Kms.)			
Dzongkhag Roads	60	60	60
Thromde Roads	47	47	47
Gewog Connectivity Roads	30	31	42
Farm Roads	70	82	82
Forest Roads
Motorable Bridges (Nos.)	16	16	16
Non-Motorable Bridges (Nos.)	59	61	65
Telephone Connections (Nos.)	482	540	810
Internet Lease Line Connections (Nos.)
Internet Broadband Connection (Nos.)
Cable TV operators	2	2	2
Taxis (Nos.) ¹	3,483	2,604	2,764
Buses Operating (Nos.) ¹	234	186	207

Note : IRSTA data covering the five western Dzongkhags.

9. TRADE & INDUSTRIES (Nos.)

	2014	2015	2016
Trade, hotels and restaurants	...	179	...
Industries	...	108	...
Constructions	...	25	...

10. TOURISM (Nos.)

	2014	2015	2016
Tourists visited	55,383	46,875	53,454

11. ELECTRICITY

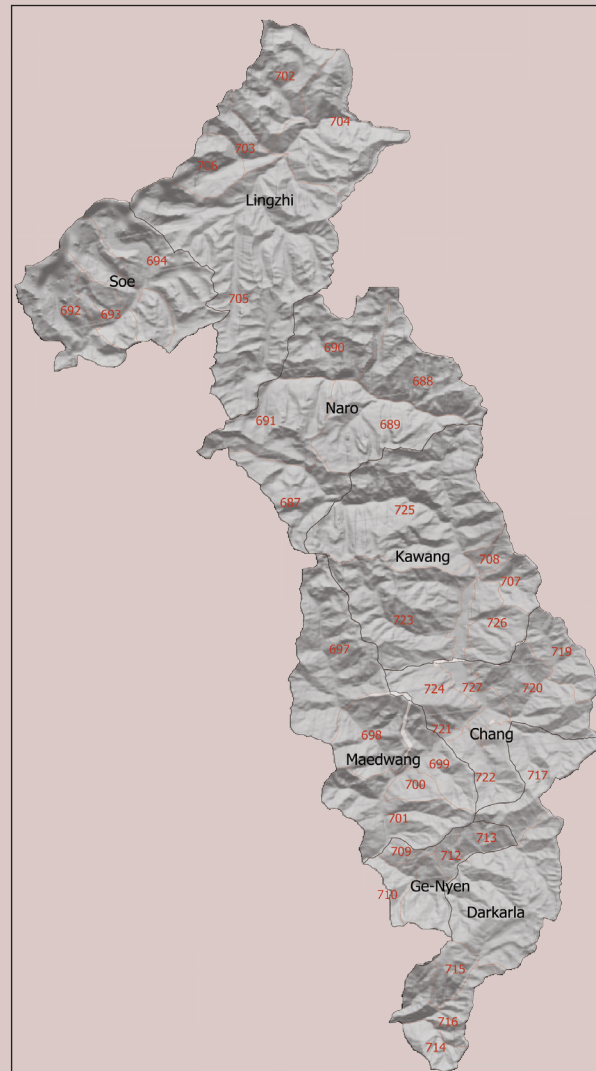
	2014	2015	2016
Households electrified (%)	100.0	100.0	100.0
Units consumed (MU)

12. RELIGION & CULTURE (Nos.)

	2014	2015	2016
Religious institutions	92	92	92
Religious monuments	353	353	353

13. PUBLIC FINANCE-Financial Year (Mill. Nu.)

	2012-13	2013-14	2014-15
Budget outlay	478.042	350.940	338.272
Current	191.887	197.572	209.683
Capital	286.155	153.368	128.589
Expenditure	452.039	339.470	323.536
Current	190.749	189.047	206.261
Capital	261.290	150.423	117.275



National Statistics Bureau

Post Box No. 338, Thimphu : Bhutan

Tel: +975-2-333296/325402/322753 Fax: +975-2-323069 www.nsb.gov.bt

ISBN 978-99936-28-46-0

Data source: Dzongkhag Statistics Section



THIMPHU

Dzongkhag at a Glance

2017

1. GENERAL

Geographical Characteristics	2017
Area (sq. km)	1,795.87
Altitude (masl.)	2,330

Administrative Tiers (Nos.)	2017
Dungkhags	1
Gewogs	8
Chiwogs	40
Villages	194
Gungtong	5

2. POPULATION

	2013	2014	2015
Total	111,307	113,669	116,012
Male	59,910	61,140	62,365
Female	51,397	52,529	53,647
Population density (per sq. km)	62.0	63.3	64.6

3. POVERTY RATE (TERMINAL) As per PAR 2012

Consumption poverty rate (%)	0.5
Multi-dimensional poverty rate (%)	1.6

4. HEALTH

Infrastructure (Nos.)	2014	2015	2016
Hospitals	1	1	1
Indigenous units	1	1	1
Basic health units (BHUs)			
BHU I	0	0	0
BHU II	8	8	8
Outreach clinics			
With sheds	5	5	7
Without sheds	2	2	1
Ambulance	1	1	1

Health Personnel (Nos.)	2014	2015	2016
Doctors	3	2	3
Dungtshos (Indigenous Doctor)	0	0	0
Sowai Menpa (Indigenous Medical Technicians)	1	2	2
Nurses	18	20	16
Technicians	12	14	9

Health Indicators	2014	2015	2016
Infant mortality rate (Per 1,000 live births)	225.8	101.9	154.3
Crude birth rate (Per 1,000 population)	1.9	1.8	...

Crude death rate (Per 1,000 population)
Maternal mortality rate (%)
Doctors per bed	26	38	27
Birth attended by trained personnel (%)	97.6	98.0	98.5
Under one immunization coverage (%)	98.8	94.5	95.0

Sanitation	2014	2015	2016
Rural water supply coverage (%)	98.0	99.7	99.3
Rural population access to safe drinking water supplies (%)	99.1	97.4	97.0
Rural population access to improved sanitation (%)	98.8	97.8	98.3

5. EDUCATION

Number of educational institutes (Includes pvt. schools-Nos)

	2013	2014	2015
	2014	2015	2016
Tertiary institute under RUB	0	0	0
Central schools	0	1	1
Higher secondary schools	1	1	1
Middle secondary schools	2	2	2
Lower secondary schools	2	1	1
Primary schools	6	6	6
Extended class room	2	2	2
Non formal education centres	15	12	5
ECCD	5	6	7
Other institutes

Educational Indicators (Includes pvt. schools)

	2014	2015	2016
School enrolment (Nos.)	3,095	3,273	3,327
Male	1,519	1,598	1,625
Female	1,576	1,675	1,702
Teachers (Nos.)	190	206	210
Male	115	127	129
Female	75	79	81.0
Pupil-teacher ratio	16.1	16.1	16.1
NFE instructors	15	11	8
Male	7	5	6
Female	8	6	2
NFE learners (Nos.)	154	140	102
Male	75	67	68
Female	79	73	34

6. AGRICULTURE

Land Registration by Type	2014	2015	2016
Dry land (acres)	2,880.03	2,880.03	2,880.03
Wet land (acres)	799.53	799.53	799.53

Orchard (acres)	638.71	638.71	638.71
Irrigation channels (kms)			
Functional	35.000	47.000	48.000
Non- functional
Power tillers (Nos.)	70	78	105
Agriculture extension centres	1	1	1
Agriculture seed production farms
Electric fencing (Nos.)	3	15	...
Electric fencing (kms.)	3.200	24.290	47.450
Farm sales shops (Nos.)	33

Renewal Natural Resources (RNR)

RNR extension centres (Nos.)	5	5	5
------------------------------	---	---	---

Livestock (Nos.)	2014	2015	2016
Veterinary hospitals	1	1	1
Livestock extension centres	3	3	3
Regional veterinary laboratories
Fishery farms
Poultry farms	12
Milk processing unit	1	1	1
Piggery farms	1	2	2

Forestry	2014	2015	2016
Territorial division HQs	1	1	1
Range offices	4	4	4
Beat offices	3	3	3
Community forest (acres)	6,775.4	6,775.4	6,775.4
Nursery (Nos.)	2	2	2
Forest cover (%)	64.3	64.3	64.3
Protected areas (acres)	846	846	846

7. EMPLOYMENT

	2014	2015	2016
Labour force (Nos.)	41,801	41,989	45,651
Male	25,078	26,469	26,976
Female	16,723	15,520	18,675
Un-employed (Nos.)	3,655	3,818	...
Population involved in agriculture (%)
Un-employment rate	8.0	8.3	...
Labour force participation rate	58.0	55.5	...