

Labour force participation rate 71.4 72.6 n.a

## 8. TRANSPORT & COMMUNICATION

Length of Road (Kms.)	2014	2015	2016
Dzongkhag roads	40.3	40.3	40.3
Thromde roads	4.4	4.4	4.4
Gewog connectivity roads	65.99	65.99	65.99
Farm roads	312.6	318.2	318.2
Forest roads	59	59	59
Motorable bridges (Nos.)			
Non-motorable bridges (Nos.)	13	13	13
Telephone connections (Nos.)	552	442	424
Internet lease line connections (Nos.)	n.a	19	19
Internet broadband connection (Nos.)	n.a	226	226
Cable TV operators	4	4	4
Taxis (Nos.)	n.a	n.a	n.a
Buses operating (Nos.)	4	4	4

## 9. TRADE & INDUSTRIES (Nos.) 2013 2014 2015

	2014	2015	2016
Trade, hotels and restaurants	765	n.a	n.a
Industries	819	715	427
Constructions	393	106	70

## 10. TOURISM (Nos.) 2014 2015 2016

Tourists visited	43,003	38083	43741
------------------	--------	-------	-------

## 11. ELECTRICITY 2013 2014 2015

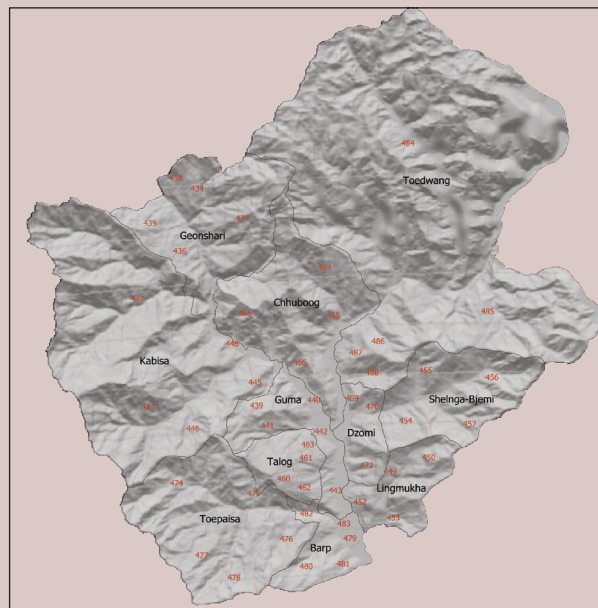
Households electrified (%)	98	98	98
Units consumed (MU)	14177484	14940733	16752758

## 12. RELIGION & CULTURE (Nos.)

	2014	2015	2016
Religious institutions	17	17	17
Religious monuments	93	93	93

## 13. PUBLIC FINANCE-Financial Year (Mill. Nu.)

	2013/14	2014/15	2015/16
Budget Outlay			
Current	306.15	352.14	338.74
Capital	109.03	115.9	148.43
Expenditure			
Current	305.82	349.59	333.76
Capital	108.83	101.05	142.23



PUNAKHA

Dzongkhag at a Glance

2017

National Statistics Bureau

Post Box No. 338, Thimphu : Bhutan

Tel: +975-2-333296/325402/322753 Fax: +975-2-323069 www.nsb.gov.bt

ISBN 978-99936-28-46-0

Data source: Dzongkhag Statistics Section

## 1. GENERAL

### Geographical Characteristics

	2016		
Area (sq. km)	1,109.81		
Altitude (masl.)	1,200-5,400		

### Administrative Tiers (Nos.)

	2016		
Dunghags	0		
Gewogs	11		
Chiwogs	55		
Villages	368		
Gungtong	35		

## 2. POPULATION

	2014	2015	2016
Total	26981	27414	27838
Male	13633	13837	14037
Female	13349	13578	13801
Population density (per sq. km)	24	25	25.08

## 3. POVERTY RATE (TERMINAL)

As per PAR 2012

Consumption poverty rate (%)	10
Multi-dimensional poverty rate (%)	13

## 4. HEALTH

### Infrastructure (Nos.)

	2014	2015	2016
Hospitals	1	1	1
Indigenous units	1	1	1
Basic health units (BHUs)			
BHU I	0	0	0
BHU II	7	7	7
Outreach clinics			
With sheds	9	9	9
Without sheds	0	0	0
Ambulance	3	3	3

### Health Personnel (Nos.)

	2014	2015	2016
Doctors	5	4	4
Dungtshos (Indigenous Doctor)	1	1	1
Sowai Menpa (Indigenous Medical Technicians)	1	2	2
Nurses	19	21	18
Technicians	17	17	17

### Health Indicators

Infant mortality rate (Per 1,000 live births)	7.26	8.2	1.6
---	------	-----	-----

Crude birth rate (Per 1,000 population)	19.77	17.36	17.6
Crude death rate (Per 1,000 population)	3.09	2.43	2.06
Maternal mortality rate (%)	0	0	0
Doctors per bed	13.3	13.3	15
Birth attended by trained personnel (%)	99.6	98.9	98.3
Under one immunization coverage (%)	100	100	100

### Sanitation

	2014	2015	2016
Rural water supply coverage (%)	0	0	0
Rural population access to safe drinking water supplies (%)	96.7	n.a	99.7
Rural population access to improved sanitation (%)	99.36	96.14	96.14

## 5. EDUCATION

### Number of educational institutes (Includes pvt. schools-Nos)

	2014	2015	2016
Tertiary institute under RUB	1	1	1
Central schools	0	1	1
Higher secondary schools	3	3	3
Middle secondary schools	4	3	3
Lower secondary schools	3	3	3
Primary schools	10	9	9
Extended class room	8	8	8
Non formal education centres	15		
ECCD	5	8	8
Other institutes	1	1	1

### Educational Indicators (Includes pvt. schools)

	2014	2015	2016
School enrolment (Nos.)	7802	7602	7342
Male	3778	3686	3579
Female	4024	3916	3763
Teachers (Nos.)	438	407	432
Male	256	246	256
Female	182	161	176
Pupil-teacher ratio	18	19	17
NFE instructors	15	13	13
Male	1	1	1
Female	14	13	13
NFE learners (Nos.)	146	119	119
Male	35	n.a	n.a
Female	111	n.a	n.a

## 6. AGRICULTURE

### Land Registration by Type

	2014	2015	2016
Dry land (acres)	647.41	647.41	647.41
Wet land (acres)	12538.13	12538.13	12538.13
Orchard (acres)	42.01	42.01	42.01
Irrigation channels (kms)	457	457	657
Functional	96.4	96.4	n.a
Non-functional	3.6	3.6	n.a
Power tillers (Nos.)	453	453	453
Agriculture extension centres	0	0	10
Agriculture seed production farms	0	0	0
Electric fencing (Nos.)	n.a	n.a	n.a
Electric fencing (kms.)	13.2	16.5	16.5
Farm sales shops (Nos.)	3	3	3

### Renewal Natural Resources (RNR)

RNR extension centres (Nos.)	11	11	11
------------------------------	----	----	----

### Livestock (Nos.)

	2014	2015	2016
Veterinary hospitals	1	1	1
Livestock extension centres	11	11	11
Regional veterinary laboratories	0	0	0
Fishery farms	0	4	3
Poultry farms	n.a	22	14
Milk processing unit	n.a	0	1
Piggery farms	n.a	20	50

### Forestry

	2014	2015	2016
Territorial division HQs	1	1	1
Range offices	1	1	1
Beat offices	5	5	5
Community forest (acres)	7561.42	8176.717	8176.717
Nursery (Nos.)	n.a	n.a	n.a
Forest cover (%)	75.87	75.87	75.87
Protected areas (acres)	n.a	n.a	n.a

## 7. EMPLOYMENT

	2013	2014	2015
Labour force (Nos.)	17354	18475	n.a
Male	8883	9369	n.a
Female	8471	9106	n.a
Un-employed (Nos.)	456	679	n.a
Population involved in agriculture (%)	79.0	59.2	n.a
Un-employment rate	2.6	3.7	n.a