

Taxis (Nos.)	4	4	4
Buses (Nos.)	0	0	1

9. TOURISM (Nos.)

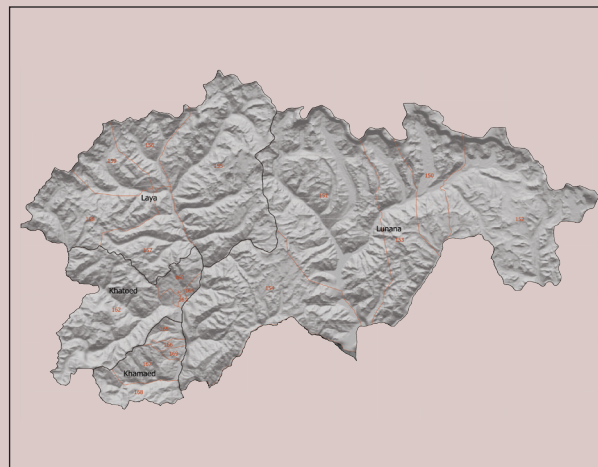
	2013	2014	2015
Tourists visited	543	601	...

10. ELECTRICITY

	2013	2014	2015
Gewogs Not Electrified	2	1	1

11. RELIGION & CULTURE (Nos.)

	2015	2016	2017
Lhakhangs	19	19	19
Chortens	64	64	65
Lobdras	0	0	0
Shedras	0	0	0
Gomdeys	0	0	0
Mandirs	0	0	0



GASA

Dzongkhag at a Glance

2017

National Statistics Bureau
 Post Box No. 338, Thimphu : Bhutan
 Tel: +975-2-333296/325402/322753 Fax: +975-2-323069 www.nsb.gov.bt
 ISBN 978-99936-28-46-0
 Data source: Dzongkhag Statistics Section

1. GENERAL

Geographical Characteristics	2016
Area (sq. km)	3117.74
Altitude (masl.)	1500-4500 meters

Administrative Tiers (Nos.)	2016
Dungkhags	0
Gewogs	4
Chiwogs	20

2. POPULATION

	2015	2016	2017
Total	3,694	3,694	3,694
Male	1,923	1,923	1,923
Female	1,771	1,771	1,771
Population density (per sq. km)	1.2	2.2	1.2

3. POVERTY RATE (TERMINAL) (PAR 2012)

Consumption poverty rate (%)	0
Multi-dimensional poverty rate (%)	<0.5

4. HEALTH

Infrastructure (Nos.)	2015	2016	2017
Hospitals	0	0	0
Indigenous Units	1	1	1
Basic Health Units (BHUs)	4	4	4
BHU I	1	1	1
BHU II	3	3	3
Outreach Clinics	5	5	5

Health Personnel (Nos.)

Doctors	1	1	1
Dungtshos (Indigenous Doctor)	1	1	1
Sowai Menpa (Indigenous Medical Technicians)	1	1	1
Nurses	2	4	4
Technicians	3	2	2

Health Indicators

Infant Mortality Rate (Per 1,000 live births)	
Crude Birth Rate (Per 1,000 population)	11.4(BLSS 2012)
Crude Death Rate (Per 1,000 population)	28.2(BLSS 2012)

Maternal Death (Nos.)			
Doctors per bed	0.28	0.27	0.27
Birth attended by trained personnel	7	6	...

Sanitation

	2015	2016	2017
Rural water supply coverage (%)
Rural population access to safe drinking water supplies (%)	98	96.9	...
Rural population access to improved sanitation (%)			54.9

5. EDUCATION

Number of educational institutes (Includes pvt. schools-Nos)

	2015	2016	2017
Tertiary Institute under RUB	0	0	0
Central Schools	0	1	1
Higher Secondary Schools	0	0	1
Middle Secondary Schools	1	1	0
Lower Secondary Schools	1	1	1
Primary Schools	2	2	2
Extended Class Room	2	2	2
Early Child Care and Development Centres		1	1
Other Institutes	0	0	0

Educational Indicators (Includes pvt. schools)

	2015	2016	2017
School enrolment (Nos.)	808	914	868
Male	448	487	461
Female	360	427	407
Teachers (Nos.)	59	63	71
Male	46	47	50
Female	13	16	21
Student Teacher Ratio	13.69	14.50	12.23
Literacy rate (%) (BLSS 2012)		49.4	

6. AGRICULTURE

Land use (Hectars)

	2013	2014	2015
Dry land		386	
Wet land		114	
Orchard		1456	

Irrigation channels (kms)			
Functional	12		
Non- functional	0		
Power tillers (Nos.)	48	48	48
Agriculture Extension Centres	4	4	4
Agriculture Seed Production Farms	0	0	0
Electric fencing (Nos.)	5	5	5
Electric fencing (kms.)	7.29	7.29	7.29

Renewal Natural Resources (RNR)

	2013	2014	2015
RNR extension centres (Nos.)	4	4	4

Livestock (Nos.)

	2013	2014	2015
Veterinary Hospitals	1	1	1
Livestock Extension Centres	4	4	4
Regional Veterinary Laboratories (RLDC)	0	0	0
Fishery Farms (group)	0	0	0
Poultry farms (group)	6	7	7
Milk processing unit	0	0	0
Piggery farms (group)	0	0	0

7. EMPLOYMENT

	2013	2014	2015
Total Labour Force (Nos.)
Male	1712	1434	n.a
Female	1127	2112	n.a
Un-Employment Rate (BLSS 2012)	5.8	3.5	n.a
Labour Force Participation Rate	78.2	75	n.a
Population Involved in Agriculture		2865	n.a
Un-employed (Nos.)	165	124	n.a

8. TRANSPORT & COMMUNICATION

	2013	2014	2015
Length of Road (Kms.)			
Secondary National Highway	48.65	48.65	48.65
Dzongkhag Roads	7	n.a	n.a
Access Road	3.18	n.a	n.a
Thromde Roads	0	0	0
Farm Roads	11.01	11.17	17.1
Motorable Bridges (Nos.)	6	6	6
Cable TV operators	0	0	0