

8. TRANSPORT & COMMUNICATION

	2014/15	2015/16	2016/17
Length of Road (Kms.)			
Dzongkhag Roads	50	52	46.40
Thromde Roads	1.7	1.7	1.70
Gewog Connectivity Roads	17.6	17.6	17.87
Farm Roads	169	187	182.29
Forest Roads	47.8	47.8	47.80
Motorable Bridges (Nos.)	21
Non-Motorable Bridges (Nos.)	7
Telephone Connections (Nos.)	646	645	445
Internet Lease Line Connections (Nos.)	30
Internet Broadband Connection (Nos.)	290
Cable TV operators	3	3	2
Taxis (Nos.)	86	83	95
Buses Operating (Nos.)	4	3	3

9. TRADE & INDUSTRIES (Nos.)

	2014	2015	2016
Trade, Hotels and restaurants	40
Industries	172
Constructions	356

10. TOURISM (Nos.)

	2014	2015	2016
Tourists visited	12237	12856	12275

11. ELECTRICITY

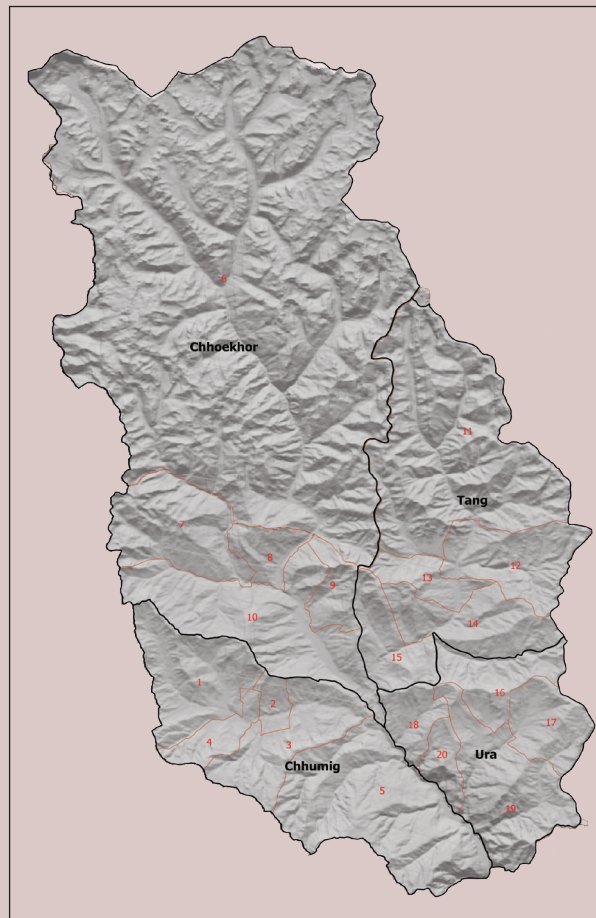
	2014	2015	2016
Households electrified (%)	100	100	100
Units consumed (MU)	0	0	9.94

12. RELIGION & CULTURE (Nos.)

	2013	2014	2015
Religious institutions	26	26	26
Religious monuments	0	0	28

13. PUBLIC FINANCE-Financial Year (Mill. Nu.)

	2014/15	2015/16	2016/17
Budget Outlay (11FYP 2013-2017)			
Current
Capital	...	618.926	...
Expenditure			
Current	216.508	209.445	275.243
Capital	69.395	189.265	315.897



BUMTHANG

Dzongkhag at a Glance

2017

National Statistics Bureau

Post Box No. 338, Thimphu : Bhutan

Tel: +975-2-333296/325402/322753 Fax: +975-2-323069 www.nsb.gov.bt

ISBN 978-99936-28-46-0

Data source: Dzongkhag Statistics Section

1. GENERAL

Geographical Characteristics	2017
Area (sq. km)	1879.5
Altitude (masl.)	200-3500

Administrative Tiers (Nos.)

Dungkhags	0
Gewogs	4
Chiwogs	20
Villages	104
Household	1900
Institutional Household	83
Gungtong	14

2. POPULATION

As per DAG 2016

Total	18965
Male	10114
Female	8851
Population density (per sq. km)	7

3. POVERTY RATE (TERMINAL)

As per PAR 2012

Consumption poverty rate (%)	3.4
Multi-dimensional poverty rate (%)	1.6

4. HEALTH

Infrastructure (Nos.)	2014/15	2015/16	2016/17
Hospitals	1	1	1
Indigenous Units	3	3	3
Basic Health Units (BHUs)	5	5	5
BHU I	0	0	0
BHU II	5	5	5
Sub-post	0	0	0
Outreach Clinics	12	12	12
With Sheds	12	12	12
Without Sheds	0	0	0
Ambulance	3	3	3

Health Personnel (Nos.)

Doctors	2	2	3
Dungtshos (Indigenous Doctor)	1	1	2
Sowai Menpa (Indigenous Medical Technicians)	1	3	4
Nurses	11	12	13
Technicians	16	16	15

Health Indicators

	2014/15	2015/16	2016/17
Infant mortality rate (Per 1,000 live births)	3
Crude birth rate (Per 1,000 population)	23
Crude death rate (Per 1,000 population)	4
Maternal mortality rate (%)	0
Doctors per bed	9
Birth attended by trained personnel (%)	93	91	98
Under one immunization coverage (%)	100

Sanitation

	2014/15	2015/16	2016/17
Rural water supply coverage (%)	98	99.1	100%
Rural population access to safe drinking water supplies (%)	98	99	100%
Rural population access to improved sanitation (%)	98	99	100%

5. EDUCATION

2014 2015 2016

Number of educational institutes (Includes pvt. schools-Nos)

Tertiary Institute under RUB			
Central Schools	0	1	3
Higher Secondary Schools	2	3	2
Middle Secondary Schools	3	1	0
Lower Secondary Schools	2	2	2
Primary Schools	12	11	12
Extended Class Room	0	1	1
Non Formal Education Centres (NFE)	13	12	10
Early Child Care and Development Centres	6	7	9
Other Institutes	1	1	1

Educational Indicators (Includes pvt. schools)

School enrolment (Nos.)			
Male	2,080	1,969	1,966
Female	1,978	2,021	2,026
Teachers (Nos.)	0	0	0
Male	177	173	171
Female	98	96	87
Pupil-teacher Ratio	15	15	1
NFE Instructors	0	0	0
Male	6	7	6
Female	8	8	4
NFE learners (Nos.)	0	0	0
Male	54	56	35
Female	84	80	63

6. AGRICULTURE

Land Registration by Type

	2014/15	2015/16	2016/17
Land Registration by Type			
Dry land (acres)	2884	2884	2232.56
Wet land (acres)	25	25	155
Orchard (acres)	12	12	40.39
Irrigation channels (kms)	58.03	63.03	55.9
Functional	58.03	63.03	55.9
Non-functional	0	0	0
Power tillers (Nos.)	215	215	219
Agriculture Extension Centres	1	1	1
Agriculture Seed Production Farms	1	1	1
Electric fencing (Nos.)	...	45	101
Electric fencing (kms.)	...	63.32	138.2
Farm sales shops (Nos.)	1	2	2

Renewal Natural Resources (RNR)

RNR extension centres (Nos.)	5	5	5
------------------------------	---	---	---

Livestock (Nos.)

	2014	2015	2016
Veterinary Hospitals	1	1	1
Livestock Extension Centres	4	4	0
Regional Veterinary Laboratories (RLDC)	0	0	0
Fishery Farms (group)	0	0	0
Poultry farms (group)	5	5	0
Milk processing unit	5	5	9
Piggery farms (group)	0	0	0

Forestry

	2014	2015	2016
Territorial Division HQs	1	1	1
Range Offices	2	2	2
Beat Offices	1	1	1
Community Forest (acreas)	...	385.22	3514.01
Nursery (Nos.)	1	1	1
Forest Cover (%)	59.3	59.3	51.79
Protected Areas (Acres)	5819	5819	5819

7. EMPLOYMENT

	2014	2015	2016
Labour Force (Nos.)	7284	...	7,284
Male	3820	...	3,820
Female	3464	...	3,464
Un-employed (Nos.)	183	...	427
Population Involved in Agriculture (%)	4.2	3.2	3.20
Un-Employment Rate	2.5	...	0.8
Labour Force Participation Rate	63.4	...	61.0