

8. TRANSPORT & COMMUNICATION

Length of Road (Kms.)	2013	2014	2015
Dzongkhag roads	168.33	168.33	279.26
Thromde roads	6.60	6.60	6.60
Gewog connectivity roads
Farm roads	610.32	610.32	530.08
Forest roads	8.5	8.5	8.5
Motorable bridges (Nos.)
Non-motorable bridges (Nos.)
Telephone connections (Nos.)	824	784	761
Internet lease line connections (Nos.)
Internet broadband connection (Nos.)
Cable TV operators	5	5	5
Taxis (Nos.)	50	50	...
Buses operating (Nos.)	11	13	...

9. TRADE & INDUSTRIES (Nos.) 2013 2014 2015

Trade, hotels and restaurants
Industries	946	1010	759
Constructions

10. TOURISM (Nos.) 2013 2014 2015

Tourists visited	2250	2272	2405
------------------	------	------	------

11. ELECTRICITY 2013 2014 2015

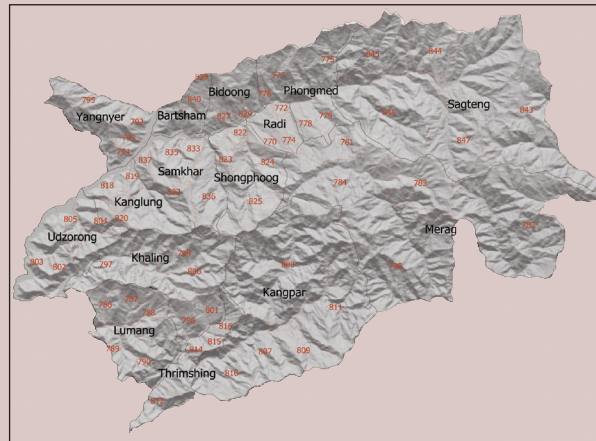
Households electrified (%)
Units consumed (MU)

12. RELIGION & CULTURE (Nos.) 2013 2014 2015

Religious institutions	...	8	8
Religious monuments

13. PUBLIC FINANCE- Financial Year (Mill. Nu.) 2012-13 2013-14 2014-15

Budget outlay	798.558	730.62	850.04
Current	496.674	538.79	637.303
Capital	301.884	191.83	212.737
Expenditure	792.55	703.71	836.47
Current	493.37	523.78	631.57
Capital	299.18	179.93	204.90



National Statistics Bureau
 Post Box No. 338, Thimphu : Bhutan
 Tel: +975-2-333296/325402/322753 Fax: +975-2-323069 www.nsb.gov.bt
 ISBN 978-99936-28-39-2
 Data source: Dzongkhag Statistics Section



TRASHIGANG Dzongkhag at a Glance 2016

1. GENERAL

Geographical Characteristics

Area (sq. km)	3066.99
Altitude (masl.)	4500

Administrative Tiers (Nos.)

Dungkhags	3
Gewogs	15
Chiwogs	78
Villages	410
Gungtong	...

2. POPULATION

	2013	2014	2015
Total	54,768	55,480	56,168
Male	27,595	27,918	28,229
Female	27,173	27,562	27,939
Population density (per sq. km)	18	18	18

3. POVERTY RATE (TERMINAL)

Consumption poverty rate (%)	11.5
Multi-dimensional poverty rate (%)	16.5

4. HEALTH

Infrastructure (Nos.)

	2013	2014	2015
Hospitals	3	3	3
Indigenous units	4	4	5
Basic health units (BHUs)			
BHU I	4	4	4
BHU II	15	15	15
Outreach clinics			
With sheds	51	55	55
Without sheds	0	1	1
Ambulance	7	6	10

Health Personnel (Nos.)

Doctors	8	11	11
Dungtshos (Indigenous Doctor)	1	1	3
Sowai Menpa (Indigenous Medical Technicians)	6	6	7
Nurses	60	60	60
Technicians	35	35	35

Health Indicators

Infant mortality rate (Per 1,000 live births)
---	-----	-----	-----

Crude birth rate (Per 1,000 population)	23.5 (BLSS 2012)		
Crude death rate (Per 1,000 population)	18 (BLSS 2012)		
Maternal mortality rate (%)
Doctors per bed	5.5	5.5	5.5
Birth attended by trained personnel (%)	78.9	83.4	96.8
Under one immunization coverage (%)

Sanitation

Rural water supply coverage (%)	96.7	96.2	96.5
Rural population access to safe drinking water supplies (%)	94.2	93.9	94.7
Rural population access to improved sanitation (%)

5. EDUCATION

Number of educational institutes (Includes pvt. schools-Nos)

	2013	2014	2015
Tertiary institute under RUB	1	1	1
Central schools	2
Higher secondary schools	4	4	4
Middle secondary schools	5	6	5
Lower secondary schools	10	9	9
Primary schools	41	37	36
Extended class room	8	10	4
Non formal education centres	113	90	64
ECCD	1	12	13
Other institutes	2	2	2

Educational Indicators (Includes pvt. schools)

School enrolment (Nos.)	11806	11624	11410
Male	6009	5843	5688
Female	5797	5781	5722
Teachers (Nos.)	654	643	619
Male	...	474	448
Female	...	169	171
Pupil-teacher ratio	18	18	18
NFE Instructors	116	116	67
Male	21	21	15
Female	95	95	52
NFE learners (Nos.)	1274	908	704
Male	287	260	249
Female	987	648	455

6. AGRICULTURE

Land Registration by Type

	2013	2014	2015
Dry land (acres)	4,974
Wet land (acres)	1,449
Orchard (acres)	0
Irrigation channels (kms)	104
Functional	89
Non-functional	15
Power tillers (Nos.)	138
Agriculture extension centres	19
Agriculture seed production farms
Electric fencing (Nos.)
Electric fencing (kms.)
Farm sales shops (Nos.)

Renewal Natural Resources (RNR)

RNR extension centres (Nos.)	19	19	19
------------------------------	----	----	----

Livestock (Nos.)

Veterinary hospitals	1	1	1
Livestock extension centres	19	19	19
Regional veterinary laboratories	1	1	1
Fishery farms
Poultry farms	50	55	45
Milk processing unit	20	24	27
Piggery farms	3	3	3

Forestry

Territorial division HQs
Range offices
Beat offices
Community forest (acres)	...	9229	9229
Nursery (Nos.)
Forest cover (%)
Protected areas (acres)

7. EMPLOYMENT

	2013	2014	2015
Labour force (Nos.)	17,137	17,996	...
Male	8,517	9,585	...
Female	8,620	8,411	...
Un-employed (Nos.)	250	106	...
Population involved in agriculture (%)	72.8	69.3	75.2
Un-employment rate	1.5	0.6	...
Labour force participation rate	66.8	67.4	...