

## 10. INDUSTRIES

(number)

Sector	2006	2007	2008
Production & manufacturing	1,133	1,254	1,389
Services	13,597	14,923	16,253
Contracts	9,775	10,084	10,431
All sectors	24,505	26,261	28,073
<b>Contract firms</b>	<b>9,775</b>	<b>10,084</b>	<b>10,431</b>
Class A	204	205	209
Class B	163	163	163
Class C	1,224	1,230	1,233
Class Petty	8,184	8,486	8,826

## 11. BALANCE OF PAYMENT

(million nu.)

Trade	2005/06	2006/07	2007/08
Value of exports	13,959.8	22,674.3	24,170.8
Value of imports	19,456.5	22,119.2	(27,092.4)
Balance of trade	-5,496.7	555.1	2,921.6
Money reserves	47.8	600.4	694.5

### Exchange rate (Nu. Per US \$)

	2005/06	2006/07	2007/08
Calendar year	45.3	41.4	43.5
Fiscal year	44.7	44.2	40.4

## 12. NATIONAL ACCOUNTS

(million nu.)

Indicators	2006	2007	2008
GDP at current market price	3,957.3	49,381.7	54,149.9
GNP at market price	39,670.0	49,166.2	53,010.6
Agriculture share to GDP (%)	22.2	18.8	18.9
GDP real growth (%)	6.4	19.7	5.0
Total final consumption expenditure	24,197.9	28,318.8	31,259.2

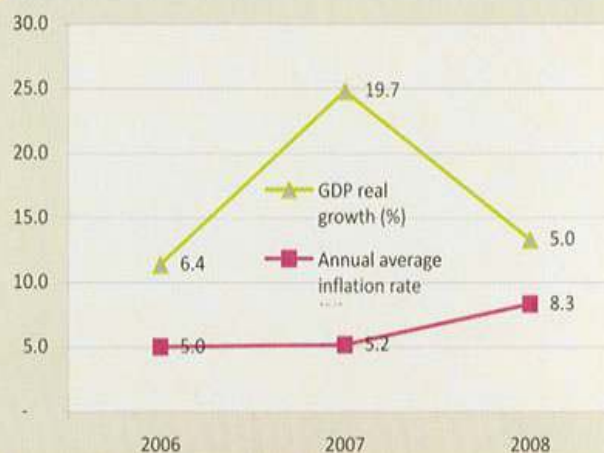
## 13. PUBLIC FINANCE

(million nu.)

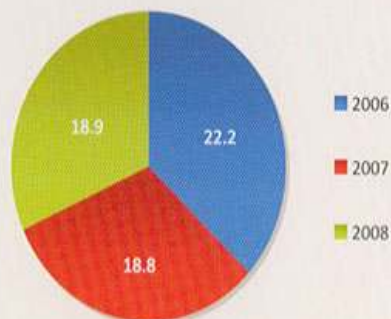
Revenues	2005/06	2006/07	2007/08
Revenue	6,902.9	12,782.2	12,346.0
Tax	4,124.7	4,266.9	5,238.4
Non tax	2,778.2	8,515.3	7,107.6
Grants	6,424.6	6,000.9	5,935.5
Total expenditure	13,770.9	15,166.1	19,693.0

## 14. CONSUMER PRICE INDICES

Consumer Price Index	2006	2007	2008
Annual average inflation rate	4.99	5.15	8.30
Purchasing power of Ngultrum (PPN) 2003 = Nu. 1	0.87	0.82	0.76



Agriculture share to GDP (percent)



NATIONAL STATISTICS BUREAU

POST BOX # 338

THIMPHU : BHUTAN

Tel: +975-2-333296/325402/322753

Fax: +975-2-323069

www.nsb.gov.bt



ཀྲུལ་ཡོང་ས་ཚེ་ས་དཔུང་བཀོད་འཛིན།

**BHUTAN AT A GLANCE**  
**2009**

NATIONAL STATISTICS BUREAU  
ROYAL GOVERNMENT OF BHUTAN



**1. GENERAL**

Area (sq. km)	38,394
Administrative Units (Nos.)	
Dzongkhags	20
Dungkhags	15
Gewogs	205
Currency	Ngultrum
National Language	Dzongkha

**2. POPULATION (Estimated) (number)**

Sex	2007	2008	2009
Male	345,298	351,269	357,305
Female	313,590	319,814	326,102
Both Sex	658,888	671,083	683,407

Age group	2007	2008	2009
0 - 14	210,333	210,855	211,747
15 - 64	417,366	428,300	439,045
65+	31,189	31,928	32,615
All ages	658,888	671,083	683,407

Indicators	2007	2008	2009
Overall sex ratio	110	110	110
Population density ( <i>person per sq. km</i> )	17.0	17.5	17.8
Median age of population ( <i>years</i> )	22.4	22.8	23.0
Aging index ( <i>elderly per 100 children</i> )	14.0	15.0	15.4
<b>Total dependency ratio</b>	<b>57.9</b>	<b>56.7</b>	<b>55.6</b>
Child dependency ratio	50.4	49.2	48.2
Old age dependency ratio	7.5	7.5	7.4

**3. HEALTH (number)**

Infrastructure	2006	2007	2008
Hospitals	29	29	30
BHUs	176	178	178
Indigenous dispensaries	21	26	35
Doctors	150	157	171
Sisters and Nurses	548	545	567
Doctors per 10,000 persons	2.3	2.3	2.5
Persons per hospital bed	571	568	568
Health coverage (%)	90	90	90
Access to safe drinking water (%)	81.4	82.3	83.2
Births attended by trained personnel (%)	57.1	53.6	66.3

**4. EDUCATION (number)**

Schools/Teachers/Students	2007	2008	2009
Community Pry. Schools	249	261	269
Primary Schools	83	94	96
Lower Secondary Schools	87	92	91
Middle Secondary Schools	37	44	46
Higher Secondary Schools	22	32	39
Institutes	19	19	23
Private Schools	24	24	27
Non Formal Centres	777	747	688
Day Care Centres	6	10	11

**Enrolment 171,842 176,778 184,124**

Schools	152,194	157,112	164,262
Male	77,911	79,527	82,794
Female	74,283	77,585	81,468
<b>Institutes</b>	<b>4,739</b>	<b>5,542</b>	<b>6,339</b>
Male	3,168	3,702	4,169
Female	1,571	1,840	2,170
Non Formal Centres	14,694	13,830	13,160
Day Care Centres	215	294	363

**Teachers 6,610 7,321 8,418**

Schools	5,372	5,745	6,668
Institutes	457	814	957
Non Formal Centres	762	736	756
Day Care Centres	19	26	37

**5. LABOUR & EMPLOYMENT (number)**

Labour force	2006	2007	2009
Total Labour Force	230,100	423,000	325,700
Male	130,100	204,300	166,800
Female	100,000	218,700	158,900

**Unemployment Rate(%) 3.2 3.7 4.0**

Rural	2.5	2.8	3.0
Urban	4.9	6.8	7.5
Labour force participation rate (LFPR)	61.8	67.3	68.5
Civil servants in Ministries (nos.)	16,853	16,955	17,646
Civil servants in other organizations (nos.)	1,497	1,852	2,202

**6. TRANSPORT & COMMUNICATIONS (number)**

Transport & Commu.	2006	2007	2008
All roads (km)	4,545	4,947	5,363
Bridges	236	260	265
Registered vehicles	33,241	35,703	40,659
Drukair passengers	110,137	121,711	119,105
Telephone connections	31,526	29,857	27,937
B-Mobile subscribers	82,078	149,439	178,346
Postal infrastructure	125	127	127

**7. ENERGY**

Energy	2005/06	2006/07	2007/08
Electricity generation (MU)	2,647.7	4,520.3	6,564.2
Electricity consumption (MU)	612.6	764.1	989.8
Towns electrified (no.)	68	71	71
Villages electrified (no.)	1,318	1,761	1,934
Consumers (000 nos.)	64.3	71.1	81.2
Sale of energy from Chhukha Hydropower (million Nu.)	3,596.1	3,807.9	3,795.9

**8. TOURISM (number)**

Tourist arrivals by region	2006	2007	2008
America	5,560	6,653	8,240
Asia & Pacific	4,264	5,429	7,514
Europe	7,031	8,777	11,698
Africa	47	66	77
Others	440	169	107
<b>All regions</b>	<b>17,342</b>	<b>21,094</b>	<b>27,636</b>
<b>Tourist arrivals by season</b>	<b>17,342</b>	<b>21,094</b>	<b>27,636</b>
Winter	3,350	4,265	5,848
Spring	5,257	6,019	7,996
Summer	1,875	2,213	3,816
Autumn	6,860	8,597	9,976

**Revenue earning (Mill. US \$) 23.9 29.9 38.8****9. AGRICULTURE (number)**

Centres	2005	2007	2009
RNR Extension Centres	90	110	136
RNR Research Centres	4	4	4
Agriculture Extension Centres	51	49	40
Agriculture Seed Production Farms	11	11	11
Farm Mechanization Centres	3	3	3
Livestock Extension Centres	54	50	42
Veterinary hospital	20	20	20
Regional Veterinary Laboratories	3	3	4
Livestock Farms	11	11	11