

PREFACE

Bhutan's first census, the Population and Housing Census of Bhutan (PHCB 2005) was conducted on 30 May 2005 based on the recommended methodologies of the United Nations. The Census provided baseline data on the total size of the population and its characteristics, age sex structure and composition. More importantly, the census provided data on the dynamics of population change – fertility, mortality and migration, which determine population change. In addition the census also provided data on housing, households characteristics, employment, literacy, health etc.

Because of the importance of such data and that it constantly changes over time, census is conventionally carried out periodically – generally after every five to ten years in most countries. The Government, public, individuals, researchers and many other users need the present population data and population projection to develop plans, policies, as well as to implement /evaluate development programs. The urgency of such needs may be fulfilled by projecting the population into the future up to a certain number of years based on the data available from periodic censuses. Of the several uses that it has, the knowledge on the change in population size and its structure is useful for framing population policies on social and economic development programs and also for research in population and development.

Projections could be undertaken with accuracy for a longer term i.e. many years into the future if reliable time series census data are available. Projections for Bhutan is made up to year 2030 based on the cross sectional data on population size, age, sex structure, fertility and mortality available through the PHCB 2005.

In response to the pressing requirement expressed by the users, the National Statistical Bureau carried out the projections at the national level at this initial instance. Sub-national projection will be carried out and made available to the users in the near future.

This report contains the results of the population projections that provide population sizes for each year, by sex and age group for each single year from 2005 to 2030. At an interval of every five years, population data by single age is presented to facilitate the requirement of specific users. The presentations of the results in tabular and graphic formats is supplemented by explanations on how the exercise was carried out, and specifically on the assumptions under which the population projections were made. The National Statistics Bureau will continue to bring out subsequent publications whenever updated data becomes available.

We hope that the Ministries, Departments, Agencies, international agencies, individuals, researchers and the public in general find the results in the publication useful, informative and beneficial.

It would not have been possible to bring out the publication without the support of the ministries, agencies, users and the dedicated staff of the National Statistics Bureau. We would like to thank every one for their valuable contributions. We would like to also thank the UNFPA for the financial and technical support in bringing out this report.

National Statistics Bureau

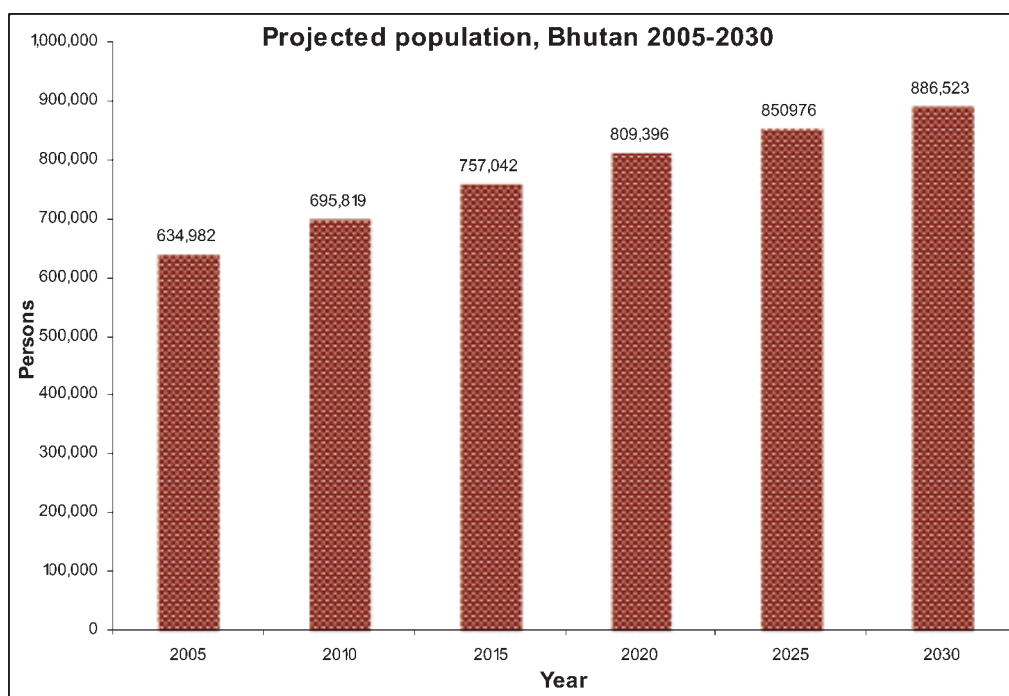
CONTENTS	PAGE
Contents	1
Summary findings	4
Section 1: Introduction	5
Section 2: Population projections and Components	5
2.1 Measures of fertility and its Assumptions	5
2.2 Measures of Mortality and Assumptions	8
2.3 Migration and Assumptions	9
Section 3 RESULTS OF THE POPULATION PROJECTIONS	9
3.1 Summary of results	9
3.2 Population Age Sex Pyramid	11
33 Result Tables (Annexures)	13
Table 1: Projected population (numbers) by sex, Bhutan 2005 - 2030	13
Table 2: Projected population (numbers) by age group and sex, Bhutan 2005 - 2007	14
Table 3: Projected population (numbers) and percent distribution by age group and Sex, 2007	15
Table 4: Projected population (numbers) by sex and single years of age, Bhutan 2007	16
Table 5: Projected population (numbers) by age group and sex, 2008 - 2010	17

Tables 6:	Projected population (numbers) and percent distribution by age and sex, Bhutan 2008	18
Table 7:	Projected population (numbers) by sex and single years of age, Bhutan 2008	19
Table 8:	Projected population (numbers) and percent distribution by age group and sex, Bhutan 2009	20
Table 9:	Projected population (numbers) by sex and single years of age, Bhutan 2009	21
Table 10:	Projected population (numbers) and percent distribution by age group and sex, Bhutan 2010	22
Table 11:	Projected population (numbers) by sex and single years of age, Bhutan 2010	23
Table 12:	Projected population (numbers) by age group and sex, Bhutan 2011 - 2013	24
Table 13:	Projected population (numbers) by age group and sex, Bhutan 2014 – 2016	25
Table 14:	Projected population (numbers) and percent distribution by age and sex, Bhutan 2015	26
Table 15:	Projected population (numbers) by sex and single years of age, Bhutan 2015	27
Table 16:	Projected population (numbers) by age group and sex, Bhutan 2017 - 2019	28
Table 17:	Projected population (numbers) by age group and sex, Bhutan 2020 - 2022	29
Table 18:	Projected population (numbers) and percent distribution by age group and sex, Bhutan 2020	30
Table 19:	Projected population (numbers) by sex and single years of age, Bhutan 2020	31

Table 20: Projected population (numbers) by age group and sex, Bhutan 2023 - 2025	32
Table 21: Projected population (numbers) and percentage distribution by age and sex, Bhutan 2025	33
Table 22: Projected population (numbers) by sex and single years of age, Bhutan 2025	34
Table 23: Projected population (numbers) by age group and sex, Bhutan 2026 - 2028	35
Table 24: Projected population (numbers) by age group and sex, Bhutan 2029 - 2030	36
Table 25: Projected population (numbers) and percent distribution by age group and sex, Bhutan 2030	37
Table 26: Projected population (numbers) by sex and single years of age, Bhutan 2030	38

Summary findings

The population of Bhutan was 634,982 in 2005 which is projected to grow to around 887,000 in 2030, an increase of 40% within the next 25 years; within the same period number of persons living per square kilometer will steadily increase from 16 persons in 2005 to an estimated 23 persons by 2030; birth rate (birth rate per 1000 population) is expected to decline from an estimated 26.1 in 2005 to 14.5 in 2030. The death rate (number of death per 1000 population) is expected to fall from 7.7 in 2005 to 6.8 by 2030. Between 2005 and 2030, because of the declining fertility, the proportion of population aged under 15 years is projected to decline from 33.1 to 22.8 percent; proportion of the population between 15-64 years will increase from 62.3 to 70.6 percent; due to similar reasons compounded by consistent increase in life expectancy, the number of older persons in the population is expected to double from 29,745 persons in 2005 to 58,110 persons by 2030, an increase in their share to the total population from 4.7 percent in 2005 to 6.6 percent in 2030; The youth population in the age group 15-24 is expected to increase from 145,810 persons to 161,280 in 2030; population in the school-going age of 5-14 years is expected to decline from 147,406 persons in 2005 to 140,037 persons in 2030.



1. INTRODUCTION

Many users need population data of the past, the present, and the future for various purposes. Population data is mainly collected through a comprehensive Population and Housing Census at a certain interval fixed according to the urgency of need. The Population and Housing Census of Bhutan 2005 provide various data on population, social and demographic characteristics. Various individuals, institutes and organizations need projected population data of the future for planning, developing strategies and research purposes. These needs are fulfilled by projecting the population into specified number of years into the future according to the need.

The population projections provide an insight into the future population scenario under certain pre-determined assumptions about the conditions and data used. The accuracy of results of the mathematical exercise of projections will depend much on the assumptions and its probability as to how precisely do the assumptions hold during the projection period. The conditions of population change will be influenced by the change in policies, development programmes, medical and health programmes, economic and political changes and various other factors. This poses a challenge to predict the future course of population change with certainty. Therefore, the utility of the population projections could be exercised in the context of various assumptions.

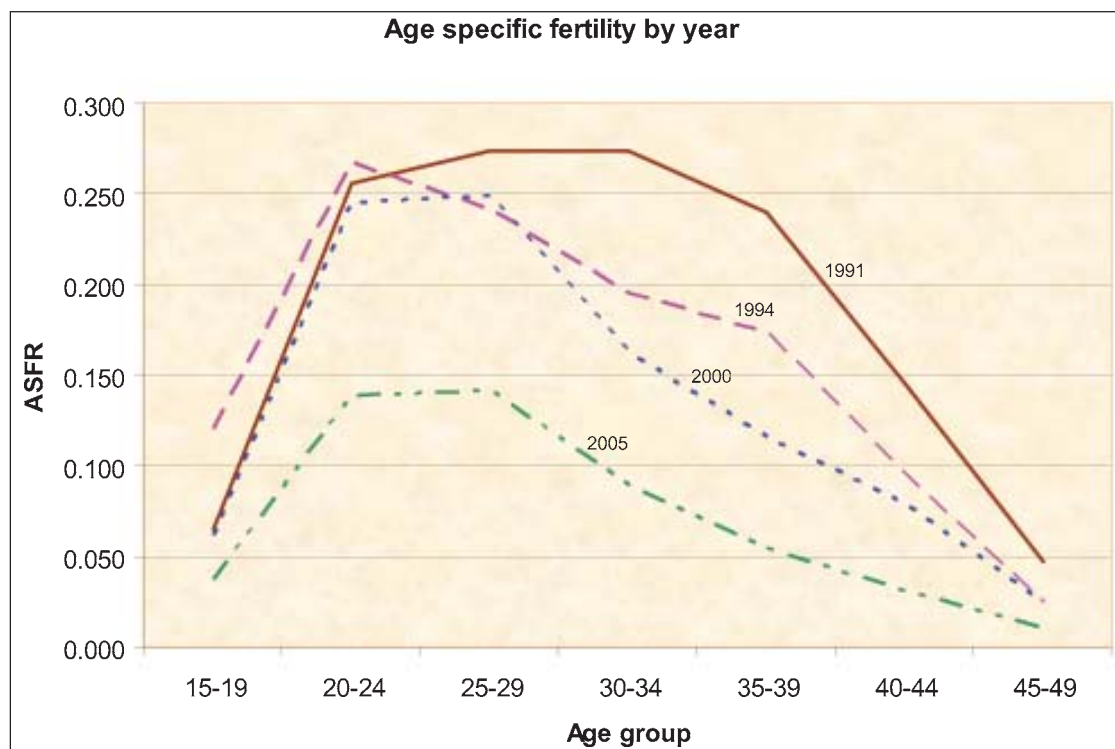
2 POPULATION PROJECTIONS AND COMPONENTS

2.1 Measures of fertility and its Assumptions

Fertility is one of the components of population change. Any population projection requires a reliable time series data on fertility. The total fertility rate is therefore an important input in population projections. Total Fertility Rate (TFR) is the number of live births a woman would bear in her reproductive life span, given that she survives until age of 50 years. According to the prevailing pattern of childbearing. It is the average number of live births per woman given that the current schedule of age specific fertility rates remained the same throughout the period and she survived to age 50.

In addition to the TFR, the age distribution of fertility is also required for population projections. The Population and Housing Census of Bhutan 2005 yielded a TFR of 2.6 for Bhutan. Upon examination of the age distribution of the population, the fertility for Bhutan has been indeed declining 10-15 years since. However, the births are usually under-enumerated in the Population Censuses. Thus, an indirect measure of TFR is estimated using the indirect method - the PF method. This method utilizes the data on Child Ever Born by women of age 15-49. This yielded a TFR of 3.6 for 2005 which was preferred and used for population projections.

Data on fertility were drawn from survey reports of various sample surveys, particularly those conducted in 1984, 1991, 1994 and 2000 Demographic Health Surveys. The surveys provided measures of Total Fertility Rates which together formed a time series data on fertility which facilitated the estimation of fertility levels well into the future. The estimated fertility rates allowed the computations of projecting the population. The figure below presents the fertility patterns based on the results of 1991, 1994, 2000 Demographic Surveys and the results of the PHCB 2005.

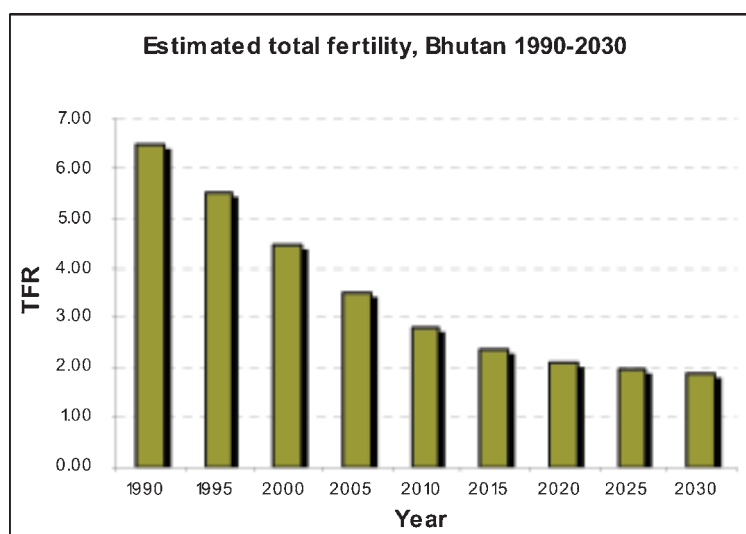


The table below presents the estimated total fertility from 2005-2030, which indicates consistent decline of total fertility from 6.50 in 1991 to 4.70 in 2000, and is estimated to decline further to around 2.0 during late 2020.

Total Fertility Rates, Bhutan, 1991-2030

Year	TFR
1991 (<i>Health Survey</i>)	6.50
1994 (<i>Health Survey</i>)	5.59
2000 (<i>Health Survey</i>)	4.70
2005 (<i>PHCB</i>)	3.59
2010 (<i>estimate</i>)	2.80
2015 (<i>estimate</i>)	2.34
2020 (<i>estimate</i>)	2.09
2025 (<i>estimate</i>)	1.95
2030 (<i>estimate</i>)	1.87

Fertility is expected to continue declining during the projection period 2005-2030 under



the assumption that the females surviving to age 50 will follow the current schedule of fertility at each age; Replacement level fertility of TFR 2.1 may be reached by 2020 and that the fertility may gradually decrease thereafter and reach the total fertility of 1.8 in 2030.

2.2 Measures of Mortality and Assumptions

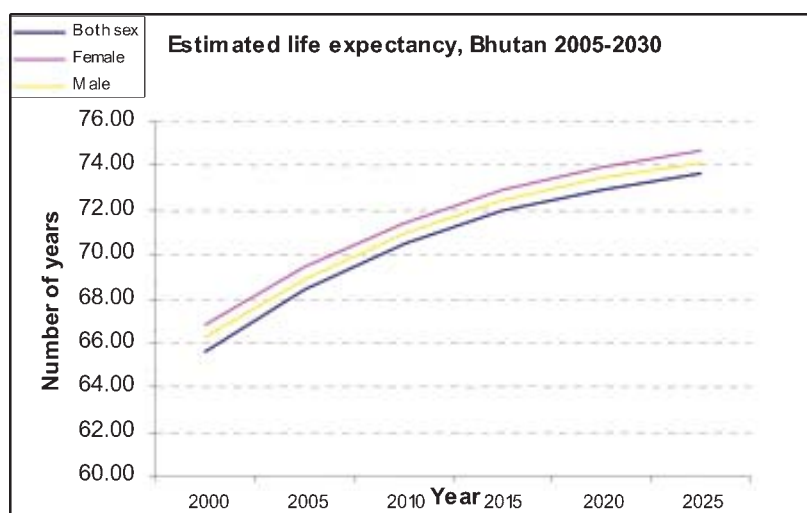
The expectation of life at birth measures the mortality schedule of a population. The mortality data is not readily available and there are limited surveys to generate reliable mortality statistics. Data on mortality is not as easily available as on fertility. Even if available, their reliability and consistency is yet to be ascertained. Mortality is one of the most important dynamics of population change. Any worthiness of population projection will depend upon the availability and quality of mortality statistics.

For the current exercise, mortality data from past available publications and the results of the Population and Housing Census 2005 is utilized to produce estimates of the Life Expectancy at birth. These estimates form an input for population projections. Age specific death rates from the Population and Housing Census of Bhutan 2005 was used to construct the Life Tables for males and females separately. The resulting indicators of life expectancies, i.e. 66.8 years for females and 65.6 years for males, in 2005 was used as an input for population projections. These results, together with a few available statistics on mortality, the distribution of specific death by age and sex, age sex distribution of the population, were used to estimate the trend of life expectancy at birth. The table below shows the estimated life expectancies.

Estimated Life Expectancy at Birth, Bhutan 2005-2030

Year	Male	Female	Both sex	Female- Male
2005	65.65	66.85	66.25	1.20
2010	68.44	69.43	68.93	0.99
2015	70.49	71.40	70.94	0.91
2020	71.94	72.87	72.41	0.93
2025	72.95	73.94	73.44	0.99
2030	73.64	74.71	74.17	1.07

It is estimated that the life expectancy of birth would increase at a gradual rate of 0.5 years between 2005-2010, and the gains in life expectancy will be very gradual after 2010 with an annual gain of 0.3 years between 2010-2020 and relatively slower after 2020 with an average gain of 0.2 years gain each year until 2030.



2.3 ASSUMPTION REGARDING MIGRATION

The component of international migration has been assumed to be negligible and would have insignificant effect to the national level projections. This is assumed to remain constant throughout the projection period, 2005-2030 and is assumed to be zero during the projection period.

3 RESULTS OF THE POPULATION PROJECTIONS

3.1 SUMMARY RESULTS

The component method is the universally accepted method of making population projections because growth of population is determined by fertility, mortality and migration rates. With available data of the past and the current data from the Population and Housing Census of Bhutan 2005 under some assumptions of population dynamics, it is possible to project the population into the future. The results of such an exercise are based on the past trend of demographic indicators drawn from past surveys and publications.

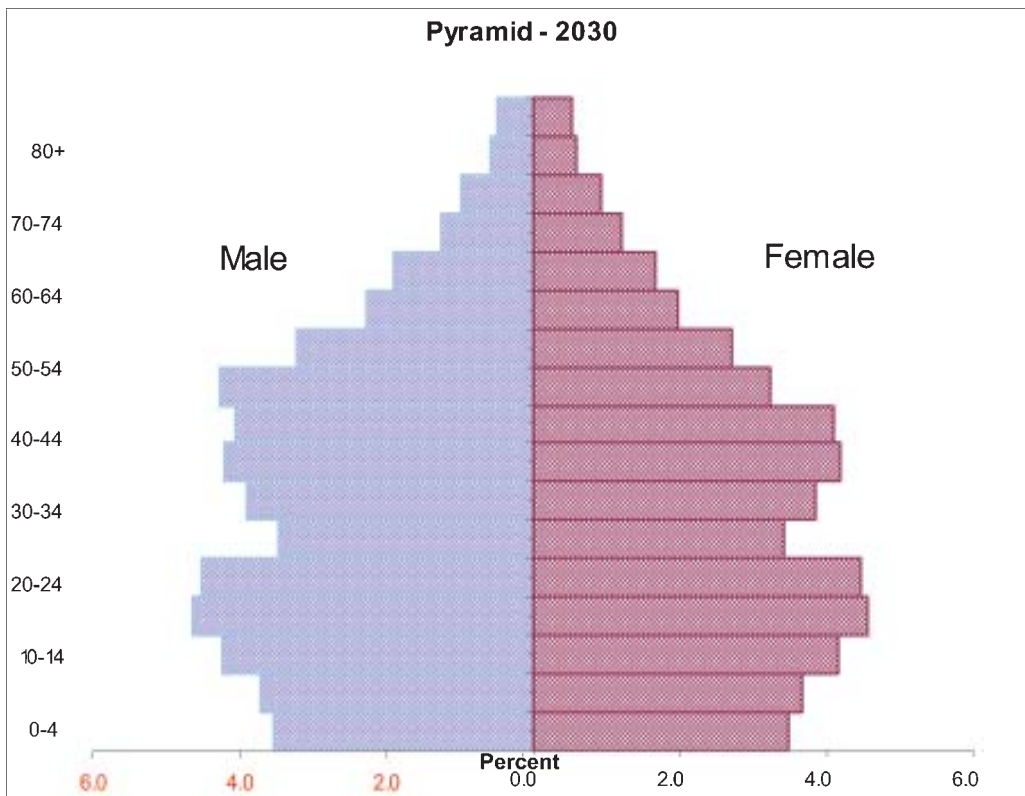
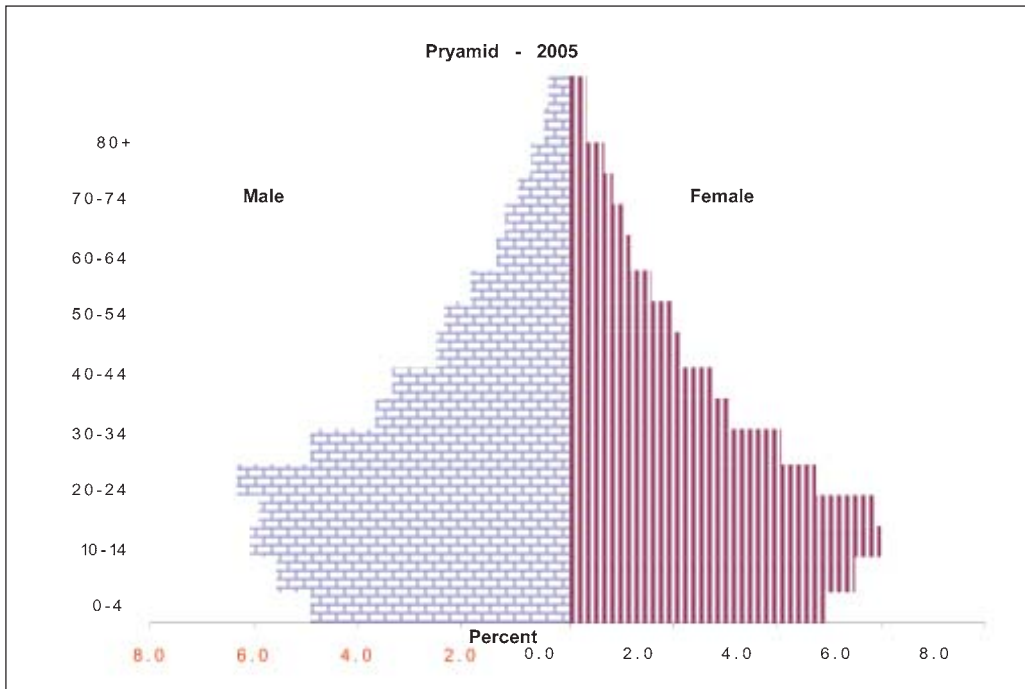
Projected population size: Population projection was carried out for the period 2005 to 2030 and the resulting tables are presented. The population of Bhutan was 634,982 in 2005 which will grow to around 887,000 in 2030, an increase of 40% in 25 years. The population is expected to grow at an estimated average annual increase of 1.4%.

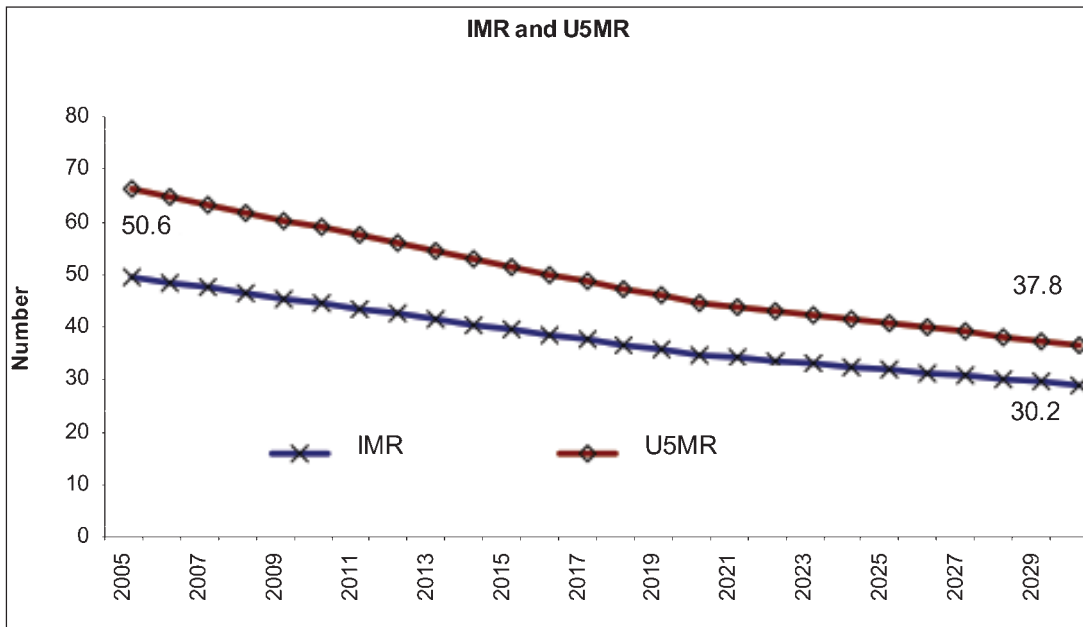
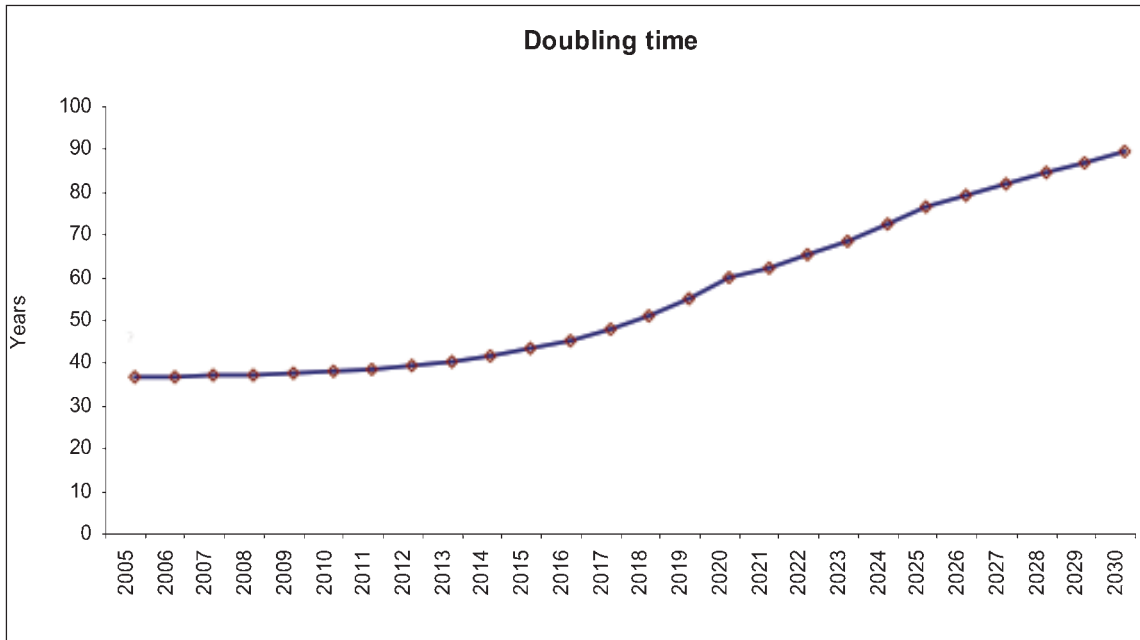
Population density: During the projection period, density of population will steadily increase from 16 persons per square km in 2005 to an estimated 23 persons per sq. km by 2030.

Births and deaths rates: During the period, birth rate may decline from 26.1 in 2005 to 14.5 in 2030 because of the declining level of total fertility. In contrast, the crude death rate is expected to continue to decrease gradually due to changing age structure of the population with the rising median age as a result of continuing decline in fertility and increase in the expectation of life at birth. The death rate is expected to fall from 7.7 in 2005 to 6.8 by 2030. The average annual rate of population growth is expected to decline from 1.8 percent in 2005-2010 to around 1 % in 2020-2030.

Population structure: Between 2005 and 2030, because of the declining fertility, the proportion of population aged less than 15 years is projected to decline from 33.1 to 22.8 percent; proportion of the population between 15-64 years will increase from 62.3 to 70.6 percent; and older population aged 65 and older will also increase. With the declining fertility along with the consistent increase in life expectancy, the number of older persons in the population is expected to double from 29,745 persons in 2005 to 58,110 persons by 2030 which is an increase in their share to the total population from 4.7 percent in 2005 to 6.6 percent in 2030. The youth population in the age group 15-24 is expected to increase from 145,810 persons to 161,280 in 2030. Another important consequence of the declining fertility will be that, at the national level, the population in the school-going age of 5-14 years is expected to decline from 147,406 persons in 2005 to 140,037 persons in 2030. The share of the population aged 5-14 years to total population of all ages is expected to decrease from 23.2 percent in 2005 to 15.8 percent in 2030.

3.2 Age sex population pyramid





3.3 Result Tables (Annexures)

Table 1: Projected population (numbers) by sex, Bhutan 2005 - 2030

Year	Persons			Percent		
	Total	Male	Female	Total	Male	Female
2005	634,982	333,595	301,387	100.0	52.5	47.5
2006	646,851	339,403	307,448	100.0	52.5	47.5
2007	658,888	345,298	313,590	100.0	52.4	47.6
2008	671083	351269	319814	100.0	52.3	47.7
2009	683407	357305	326102	100.0	52.3	47.7
2010	695822	363383	332439	100.0	52.2	47.8
2011	708265	369476	338789	100.0	52.2	47.8
2012	720679	375554	345125	100.0	52.1	47.9
2013	733004	381582	351422	100.0	52.1	47.9
2014	745153	387520	357633	100.0	52.0	48.0
2015	757042	393324	363718	100.0	52.0	48.0
2016	768577	398948	369629	100.0	51.9	48.1
2017	779666	404347	375319	100.0	51.9	48.1
2018	790215	409474	380741	100.0	51.8	48.2
2019	800154	414293	385861	100.0	51.8	48.2
2020	809397	418760	390637	100.0	51.7	48.3
2021	818370	423085	395285	100.0	51.7	48.3
2022	827038	427250	399788	100.0	51.7	48.3
2023	835379	431247	404132	100.0	51.6	48.4
2024	843363	435058	408305	100.0	51.6	48.4
2025	850,976	438,679	412,297	100.0	51.6	48.4
2026	858410	442200	416210	100.0	51.5	48.5
2027	865662	445626	420036	100.0	51.5	48.5
2028	872759	448965	423794	100.0	51.4	48.6
2029	879707	452224	427483	100.0	51.4	48.6
2030	886523	455409	431114	100.0	51.4	48.6

Table 2: Projected population (numbers) by age group and sex, Bhutan 2005 - 2007

Age group	2005 (observed)			2006			2007		
	Total	Male	Female	Total	Male	Female	Total	Male	Female
0-4	62,553	31,489	31,064	65,100	32,702	32,398	68,180	34,183	33,997
5-9	70,399	35,547	34,852	68,780	34,808	33,972	67,205	34,102	33,103
10-14	77,007	38,728	38,279	76,190	38,420	37,770	74,948	37,823	37,125
15-19	75,236	37,504	37,732	75,810	37,404	38,406	76,381	37,672	38,709
20-24	70,574	40,254	30,320	72,016	40,330	31,686	73,004	39,722	33,282
25-29	57,358	31,386	25,972	60,311	33,428	26,883	63,148	35,554	27,594
30-34	42,806	23,208	19,598	44,844	24,282	20,562	47,480	25,672	21,808
35-39	38,729	21,124	17,605	39,547	21,568	17,979	39,956	21,764	18,192
40-44	29,900	16,022	13,878	31,182	16,759	14,423	32,929	17,777	15,152
45-49	27,662	14,895	12,767	27,970	15,037	12,933	28,039	15,037	13,002
50-54	22,047	11,779	10,268	23,088	12,340	10,748	24,140	12,919	11,221
55-59	16,392	8,764	7,628	16,973	9,074	7,899	17,764	9,479	8,285
60-64	14,574	7,564	7,010	14,593	7,582	7,011	14,525	7,579	6,946
65-69	11,361	5,999	5,362	11,581	6,079	5,502	11,870	6,178	5,692
70-74	8,742	4,493	4,249	8,865	4,567	4,298	8,913	4,611	4,302
75-79	5,245	2,677	2,568	5,469	2,794	2,675	5,712	2,908	2,804
80+	4,397	2,162	2,235	4,532	2,229	2,303	4,694	2,318	2,376
Total	634,982	333,595	301,387	646,851	339,403	307,448	658,888	345,298	313,590

Table 3: Projected population (numbers) and percent distribution by age group and Sex, Bhutan 2007

Age	Persons			Percentage		
	Male	Female	Both sex	Male	Female	Both sex
0-4	34,183	33,997	68,180	9.9	10.8	10.3
5-9	34,102	33,103	67,205	9.9	10.6	10.2
10-14	37,823	37,125	74,948	11.0	11.8	11.4
15-19	37,672	38,709	76,381	10.9	12.3	11.6
20-24	39,722	33,282	73,004	11.5	10.6	11.1
25-29	35,554	27,594	63,148	10.3	8.8	9.6
30-34	25,672	21,808	47,480	7.4	7.0	7.2
35-39	21,764	18,192	39,956	6.3	5.8	6.1
40-44	17,777	15,152	32,929	5.1	4.8	5.0
45-49	15,037	13,002	28,039	4.4	4.1	4.3
50-54	12,919	11,221	24,140	3.7	3.6	3.7
55-59	9,479	8,285	17,764	2.7	2.6	2.7
60-64	7,579	6,946	14,525	2.2	2.2	2.2
65-69	6,178	5,692	11,870	1.8	1.8	1.8
70-74	4,611	4,302	8,913	1.3	1.4	1.4
75-79	2,908	2,804	5,712	0.8	0.9	0.9
80+	2,318	2,376	4,694	0.7	0.8	0.7
All ages	345,298	313,590	658,888	100.0	100.0	100.0

Table 4: Projected population (numbers) by sex and single years of age, Bhutan 2007

Age	Male	Female	Both sex	Age	Male	Female	Both sex	Age	Male	Female	Both sex
0	6,894	7,275	14,169	27	7,213	5,530	12,743	54	2,323	2,018	4,341
1	6,901	6,960	13,861	28	6,826	5,284	12,110	55	2,152	1,869	4,021
2	6,860	6,725	13,585	29	6,365	5,032	11,397	56	1,996	1,732	3,728
3	6,797	6,564	13,361	30	5,854	4,777	10,631	57	1,864	1,623	3,487
4	6,731	6,473	13,204	31	5,374	4,536	9,910	58	1,768	1,552	3,320
5	6,688	6,448	13,136	32	4,997	4,325	9,322	59	1,699	1,509	3,208
6	6,689	6,483	13,172	33	4,777	4,155	8,932	60	1,638	1,475	3,113
7	6,752	6,573	13,325	34	4,670	4,015	8,685	61	1,574	1,437	3,011
8	6,887	6,712	13,599	35	4,601	3,891	8,492	62	1,513	1,395	2,908
9	7,086	6,887	13,973	36	4,507	3,768	8,275	63	1,456	1,346	2,802
10	7,317	7,083	14,400	37	4,390	3,644	8,034	64	1,398	1,293	2,691
11	7,530	7,280	14,810	38	4,229	3,512	7,741	65	1,345	1,241	2,586
12	7,665	7,459	15,124	39	4,037	3,377	7,414	66	1,295	1,191	2,486
13	7,685	7,600	15,285	40	3,848	3,247	7,095	67	1,240	1,141	2,381
14	7,626	7,703	15,329	41	3,684	3,129	6,813	68	1,181	1,087	2,268
15	7,524	7,804	15,328	42	3,536	3,019	6,555	69	1,117	1,032	2,149
16	7,450	7,878	15,328	43	3,409	2,922	6,331	70	1,051	975	2,026
17	7,444	7,855	15,299	44	3,300	2,835	6,135	71	986	918	1,904
18	7,544	7,707	15,251	45	3,194	2,750	5,944	72	921	861	1,782
19	7,710	7,465	15,175	46	3,089	2,668	5,757	73	858	803	1,661
20	7,882	7,178	15,060	47	2,996	2,592	5,588	74	795	745	1,540
21	7,998	6,895	14,893	48	2,916	2,527	5,443	75	730	686	1,416
22	8,039	6,625	14,664	49	2,842	2,465	5,307	76	661	627	1,288
23	7,976	6,394	14,370	50	2,781	2,413	5,194	77	588	563	1,151
24	7,827	6,190	14,017	51	2,713	2,357	5,070	78	509	498	1,007
25	7,665	5,985	13,650	52	2,618	2,275	4,893	79	420	430	850
26	7,485	5,763	13,248	53	2,484	2,158	4,642	80 +	2,318	2,376	4,694
Sub total	198,652	187,964	386,616	Sub total	111,250	93,203	204,453	Sub total	35,396	32,423	67,819
								Total	345,298	313,590	658,888

Table 5: Projected population (numbers) by age group and sex, Bhutan 2008 - 2010

Age group	2008			2009			2010		
	Total	Male	Female	Total	Male	Female	Total	Male	Female
0-4	71,833	35,985	35,848	76,103	38,177	37,926	81,063	40,853	40,210
5-9	65,610	33,346	32,264	63,888	32,424	31,464	61,901	31,204	30,697
10-14	73,412	37,037	36,375	71,756	36,199	35,557	70,108	35,404	34,704
15-19	76,824	38,125	38,699	76,949	38,479	38,470	76,636	38,536	38,100
20-24	73,669	38,736	34,933	74,201	37,806	36,395	74,730	37,240	37,490
25-29	65,769	37,527	28,242	68,070	39,045	29,025	69,980	39,907	30,073
30-34	50,524	27,324	23,200	53,693	29,149	24,544	56,767	31,061	25,706
35-39	40,269	21,893	18,376	40,924	22,208	18,716	42,226	22,888	19,338
40-44	34,875	18,913	15,962	36,647	19,940	16,707	38,000	20,708	17,292
45-49	28,074	15,018	13,056	28,362	15,153	13,209	29,087	15,553	13,534
50-54	25,122	13,464	11,658	25,937	13,912	12,025	26,535	14,229	12,306
55-59	18,704	9,953	8,751	19,704	10,463	9,241	20,697	10,980	9,717
60-64	14,470	7,594	6,876	14,558	7,679	6,879	14,873	7,867	7,006
65-69	12,171	6,280	5,891	12,416	6,366	6,050	12,566	6,425	6,141
70-74	8,936	4,641	4,295	8,992	4,677	4,315	9,113	4,729	4,384
75-79	5,942	3,013	2,929	6,126	3,099	3,027	6,253	3,163	3,090
80+	4,879	2,420	2,459	5,081	2,529	2,552	5,287	2,636	2,651
Total	671,083	351,269	319,814	683,407	357,305	326,102	695,822	363,383	332,439

Table 6: Projected population (numbers) and percent distribution by age and sex, Bhutan 2008

Age	Persons			Percentage		
	Male	Female	Both sex	Male	Female	Both sex
0-4	35,985	35,848	71,833	10.2	11.2	10.7
5-9	33,346	32,264	65,610	9.5	10.1	9.8
10-14	37,037	36,375	73,412	10.5	11.4	10.9
15-19	38,125	38,699	76,824	10.9	12.1	11.4
20-24	38,736	34,933	73,669	11.0	10.9	11.0
25-29	37,527	28,242	65,769	10.7	8.8	9.8
30-34	27,324	23,200	50,524	7.8	7.3	7.5
35-39	21,893	18,376	40,269	6.2	5.7	6.0
40-44	18,913	15,962	34,875	5.4	5.0	5.2
45-49	15,018	13,056	28,074	4.3	4.1	4.2
50-54	13,464	11,658	25,122	3.8	3.6	3.7
55-59	9,953	8,751	18,704	2.8	2.7	2.8
60-64	7,594	6,876	14,470	2.2	2.1	2.2
65-69	6,280	5,891	12,171	1.8	1.8	1.8
70-74	4,641	4,295	8,936	1.3	1.3	1.3
75-79	3,013	2,929	5,942	0.9	0.9	0.9
80+	2,420	2,459	4,879	0.7	0.8	0.7
All ages	351,269	319,814	671,083	100.0	100.0	100.0

Table 7: Projected population (numbers) by sex and single years of age, Bhutan 2008

Age	Male	Female	Both sex	Age	Male	Female	Both sex	Age	Male	Female	Both sex
0	7,699	7,998	15,697	27	7,682	5,605	13,287	54	2,450	2,126	4,576
1	7,426	7,488	14,914	28	7,329	5,382	12,711	55	2,271	1,979	4,250
2	7,167	7,076	14,243	29	6,835	5,197	12,032	56	2,109	1,846	3,955
3	6,940	6,757	13,697	30	6,283	5,026	11,309	57	1,965	1,729	3,694
4	6,753	6,529	13,282	31	5,772	4,846	10,618	58	1,850	1,635	3,485
5	6,624	6,392	13,016	32	5,346	4,657	10,003	59	1,758	1,562	3,320
6	6,566	6,342	12,908	33	5,055	4,446	9,501	60	1,669	1,491	3,160
7	6,588	6,377	12,965	34	4,868	4,225	9,093	61	1,580	1,420	3,000
8	6,694	6,489	13,183	35	4,698	4,002	8,700	62	1,504	1,361	2,865
9	6,874	6,664	13,538	36	4,513	3,797	8,310	63	1,444	1,318	2,762
10	7,097	6,881	13,978	37	4,353	3,631	7,984	64	1,397	1,286	2,683
11	7,317	7,108	14,425	38	4,222	3,513	7,735	65	1,356	1,261	2,617
12	7,483	7,316	14,799	39	4,107	3,433	7,540	66	1,316	1,235	2,551
13	7,563	7,476	15,039	40	4,020	3,373	7,393	67	1,267	1,194	2,461
14	7,577	7,594	15,171	41	3,936	3,307	7,243	68	1,206	1,137	2,343
15	7,574	7,707	15,281	42	3,823	3,221	7,044	69	1,135	1,064	2,199
16	7,590	7,803	15,393	43	3,663	3,101	6,764	70	1,061	988	2,049
17	7,611	7,826	15,437	44	3,471	2,960	6,431	71	990	915	1,905
18	7,651	7,755	15,406	45	3,267	2,811	6,078	72	923	851	1,774
19	7,699	7,608	15,307	46	3,084	2,677	5,761	73	863	795	1,658
20	7,721	7,431	15,152	47	2,947	2,574	5,521	74	804	746	1,550
21	7,721	7,241	14,962	48	2,874	2,513	5,387	75	746	700	1,446
22	7,733	7,017	14,750	49	2,846	2,481	5,327	76	684	652	1,336
23	7,765	6,761	14,526	50	2,838	2,463	5,301	77	614	596	1,210
24	7,796	6,483	14,279	51	2,812	2,433	5,245	78	533	531	1,064
25	7,843	6,181	14,024	52	2,745	2,372	5,117	79	436	450	886
26	7,838	5,877	13,715	53	2,619	2,264	4,883	80 +	2,420	2,459	4,879
Sub total	198,910	190,177	389,087	Sub total	116,008	96,310	212,318	Sub total	36,351	33,327	69,678
								Total	351,269	319,814	671,083

Table 8: Projected population (numbers) and percent distribution by age group and sex, Bhutan 2009

Age	Persons			Percentage		
	Male	Female	Both sex	Male	Female	Both sex
0-4	38,177	37,926	76,103	10.7	11.6	11.1
5-9	32,424	31,464	63,888	9.1	9.6	9.3
10-14	36,199	35,557	71,756	10.1	10.9	10.5
15-19	38,479	38,470	76,949	10.8	11.8	11.3
20-24	37,806	36,395	74,201	10.6	11.2	10.9
25-29	39,045	29,025	68,070	10.9	8.9	10.0
30-34	29,149	24,544	53,693	8.2	7.5	7.9
35-39	22,208	18,716	40,924	6.2	5.7	6.0
40-44	19,940	16,707	36,647	5.6	5.1	5.4
45-49	15,153	13,209	28,362	4.2	4.1	4.2
50-54	13,912	12,025	25,937	3.9	3.7	3.8
55-59	10,463	9,241	19,704	2.9	2.8	2.9
60-64	7,679	6,879	14,558	2.1	2.1	2.1
65-69	6,366	6,050	12,416	1.8	1.9	1.8
70-74	4,677	4,315	8,992	1.3	1.3	1.3
75-79	3,099	3,027	6,126	0.9	0.9	0.9
80+	2,529	2,552	5,081	0.7	0.8	0.7
All ages	357,305	326,102	683,407	100.0	100.0	100.0

Table 9: Projected population (numbers) by sex and single years of age, Bhutan 2009

Age	Male	Female	Both sex	Age	Male	Female	Both sex	Age	Male	Female	Both sex
0	8,653	8,779	17,432	27	8,033	5,720	13,753	54	2,559	2,220	4,779
1	8,063	8,071	16,134	28	7,731	5,515	13,246	55	2,383	2,084	4,467
2	7,551	7,473	15,024	29	7,244	5,382	12,626	56	2,225	1,960	4,185
3	7,124	6,988	14,112	30	6,696	5,275	11,971	57	2,077	1,840	3,917
4	6,786	6,615	13,401	31	6,194	5,143	11,337	58	1,947	1,730	3,677
5	6,546	6,357	12,903	32	5,744	4,966	10,710	59	1,831	1,627	3,458
6	6,411	6,214	12,625	33	5,393	4,723	10,116	60	1,716	1,522	3,238
7	6,382	6,186	12,568	34	5,122	4,437	9,559	61	1,602	1,421	3,023
8	6,459	6,267	12,726	35	4,848	4,133	8,981	62	1,511	1,346	2,857
9	6,626	6,440	13,066	36	4,567	3,863	8,430	63	1,447	1,304	2,751
10	6,853	6,674	13,527	37	4,360	3,661	8,021	64	1,403	1,286	2,689
11	7,094	6,930	14,024	38	4,243	3,551	7,794	65	1,370	1,280	2,650
12	7,299	7,160	14,459	39	4,190	3,508	7,698	66	1,334	1,269	2,603
13	7,436	7,335	14,771	40	4,182	3,498	7,680	67	1,288	1,236	2,524
14	7,517	7,458	14,975	41	4,161	3,470	7,631	68	1,225	1,174	2,399
15	7,604	7,575	15,179	42	4,075	3,398	7,473	69	1,149	1,091	2,240
16	7,702	7,688	15,390	43	3,888	3,262	7,150	70	1,070	1,001	2,071
17	7,751	7,751	15,502	44	3,634	3,079	6,713	71	996	918	1,914
18	7,739	7,755	15,494	45	3,356	2,882	6,238	72	928	849	1,777
19	7,683	7,701	15,384	46	3,114	2,710	5,824	73	869	795	1,664
20	7,576	7,633	15,209	47	2,943	2,585	5,528	74	814	752	1,566
21	7,473	7,538	15,011	48	2,871	2,523	5,394	75	761	714	1,475
22	7,457	7,363	14,820	49	2,869	2,509	5,378	76	702	673	1,375
23	7,561	7,097	14,658	50	2,893	2,511	5,404	77	635	623	1,258
24	7,739	6,764	14,503	51	2,891	2,495	5,386	78	552	555	1,107
25	7,952	6,386	14,338	52	2,843	2,447	5,290	79	449	462	911
26	8,085	6,022	14,107	53	2,726	2,352	5,078	80 +	2,529	2,552	5,081
Sub total	199,122	192,220	391,342	Sub total	120,811	99,598	220,409	Sub total	37,372	34,284	71,656
								Total	357,305	326,102	683,407

Table 10: Projected population (numbers) and percent distribution by age group and sex, Bhutan 2010

Age	Persons			Percentage		
	Male	Female	Both sex	Male	Female	Both sex
0-4	40,853	40,210	81,063	11.2	12.1	11.6
5-9	31,204	30,697	61,901	8.6	9.2	8.9
10-14	35,404	34,704	70,108	9.7	10.4	10.1
15-19	38,536	38,100	76,636	10.6	11.5	11.0
20-24	37,240	37,490	74,730	10.2	11.3	10.7
25-29	39,907	30,073	69,980	11.0	9.0	10.1
30-34	31,061	25,706	56,767	8.5	7.7	8.2
35-39	22,888	19,338	42,226	6.3	5.8	6.1
40-44	20,708	17,292	38,000	5.7	5.2	5.5
45-49	15,553	13,534	29,087	4.3	4.1	4.2
50-54	14,229	12,306	26,535	3.9	3.7	3.8
55-59	10,980	9,717	20,697	3.0	2.9	3.0
60-64	7,867	7,006	14,873	2.2	2.1	2.1
65-69	6,425	6,141	12,566	1.8	1.8	1.8
70-74	4,729	4,384	9,113	1.3	1.3	1.3
75-79	3,163	3,090	6,253	0.9	0.9	0.9
80+	2,636	2,651	5,287	0.7	0.8	0.8
All ages	363,383	332,439	695,822	100.0	100.0	100.0

Table 11: Projected population (numbers) by sex and single years of age, Bhutan 2010

Age	Male	Female	Both sex	Age	Male	Female	Both sex	Age	Male	Female	Both sex
0	9,781	9,623	19,404	27	8,212	5,915	14,127	54	2,639	2,294	4,933
1	8,846	8,704	17,550	28	7,973	5,718	13,691	55	2,480	2,174	4,654
2	8,037	7,911	15,948	29	7,541	5,600	13,141	56	2,336	2,064	4,400
3	7,363	7,249	14,612	30	7,055	5,513	12,568	57	2,192	1,948	4,140
4	6,826	6,723	13,549	31	6,606	5,391	11,997	58	2,053	1,827	3,880
5	6,433	6,337	12,770	32	6,173	5,214	11,387	59	1,919	1,704	3,623
6	6,190	6,097	12,287	33	5,785	4,953	10,738	60	1,782	1,575	3,357
7	6,098	6,001	12,099	34	5,442	4,635	10,077	61	1,649	1,452	3,101
8	6,152	6,047	12,199	35	5,078	4,296	9,374	62	1,543	1,363	2,906
9	6,331	6,215	12,546	36	4,717	3,995	8,712	63	1,470	1,316	2,786
10	6,595	6,465	13,060	37	4,458	3,772	8,230	64	1,423	1,300	2,723
11	6,889	6,747	13,636	38	4,333	3,656	7,989	65	1,387	1,298	2,685
12	7,147	6,999	14,146	39	4,302	3,619	7,921	66	1,347	1,286	2,633
13	7,328	7,183	14,511	40	4,325	3,618	7,943	67	1,299	1,256	2,555
14	7,445	7,310	14,755	41	4,323	3,594	7,917	68	1,234	1,193	2,427
15	7,582	7,429	15,011	42	4,244	3,524	7,768	69	1,158	1,108	2,266
16	7,731	7,557	15,288	43	4,047	3,377	7,424	70	1,079	1,016	2,095
17	7,802	7,655	15,457	44	3,769	3,179	6,948	71	1,005	931	1,936
18	7,765	7,718	15,483	45	3,464	2,966	6,430	72	938	862	1,800
19	7,656	7,741	15,397	46	3,204	2,781	5,985	73	880	808	1,688
20	7,481	7,758	15,239	47	3,018	2,646	5,664	74	827	767	1,594
21	7,329	7,740	15,069	48	2,936	2,579	5,515	75	774	730	1,504
22	7,297	7,616	14,913	49	2,931	2,562	5,493	76	715	690	1,405
23	7,440	7,361	14,801	50	2,952	2,561	5,513	77	648	638	1,286
24	7,693	7,015	14,708	51	2,945	2,542	5,487	78	565	566	1,131
25	7,988	6,612	14,600	52	2,901	2,498	5,399	79	461	466	927
26	8,193	6,228	14,421	53	2,792	2,411	5,203	80 +	2,636	2,651	5,287
Sub total	199,418	194,041	393,459	Sub total	125,526	103,115	228,641	Sub total	38,439	35,283	73,722
								Total	363,383	332,439	695,822

Table 12: Projected population (numbers) by age group and sex, Bhutan 2011 - 2013

Age group	2011			2012			2013		
	Total	Male	Female	Total	Male	Female	Total	Male	Female
0-4	81,918	41,285	40,633	82,559	41,610	40,949	82,936	41,801	41,135
5-9	64,406	32,399	32,007	67,467	33,872	33,595	71,111	35,670	35,441
10-14	68,504	34,672	33,832	66,946	33,974	32,972	65,365	33,224	32,141
15-19	75,834	38,234	37,600	74,607	37,645	36,962	73,090	36,868	36,222
20-24	75,316	37,149	38,167	75,899	37,422	38,477	76,354	37,879	38,475
25-29	71,427	39,991	31,436	72,426	39,398	33,028	73,105	38,429	34,676
30-34	59,707	33,091	26,616	62,533	35,205	27,328	65,147	37,169	27,978
35-39	44,255	23,957	20,298	46,873	25,337	21,536	49,896	26,978	22,918
40-44	38,818	21,152	17,666	39,237	21,354	17,883	39,561	21,490	18,071
45-49	30,353	16,280	14,073	32,072	17,280	14,792	33,987	18,396	15,591
50-54	26,848	14,375	12,473	26,931	14,384	12,547	26,987	14,379	12,608
55-59	21,696	11,516	10,180	22,705	12,068	10,637	23,651	12,590	11,061
60-64	15,424	8,158	7,266	16,167	8,535	7,632	17,044	8,974	8,070
65-69	12,600	6,451	6,149	12,560	6,460	6,100	12,534	6,485	6,049
70-74	9,314	4,804	4,510	9,570	4,894	4,676	9,836	4,986	4,850
75-79	6,350	3,221	3,129	6,397	3,259	3,138	6,430	3,289	3,141
80+	5,495	2,741	2,754	5,730	2,857	2,873	5,970	2,975	2,995
Total	708,265	369,476	338,789	720,679	375,554	345,125	733,004	381,582	351,422

Table 13: Projected population (numbers) by age group and sex, Bhutan 2014 - 2016

Age group	2014			2015			2016		
	Total	Male	Female	Total	Male	Female	Total	Male	Female
0-4	83,001	41,835	41,166	82,716	41,693	41,023	82,041	41,354	40,687
5-9	75,377	37,859	37,518	80,336	40,533	39,803	81,213	40,975	40,238
10-14	63,657	32,309	31,348	61,685	31,097	30,588	64,190	32,292	31,898
15-19	71,452	36,039	35,413	69,822	35,253	34,569	68,236	34,530	33,706
20-24	76,495	38,239	38,256	76,199	38,303	37,896	75,416	38,010	37,406
25-29	73,652	37,516	36,136	74,196	36,963	37,233	74,797	36,881	37,916
30-34	67,446	38,683	28,763	69,358	39,547	29,811	70,813	39,641	31,172
35-39	53,044	28,790	24,254	56,100	30,689	25,411	59,026	32,706	26,320
40-44	40,225	21,811	18,414	41,526	22,491	19,035	43,542	23,553	19,989
45-49	35,732	19,405	16,327	37,069	20,163	16,906	37,885	20,606	17,279
50-54	27,287	14,522	12,765	28,007	14,919	13,088	29,253	15,633	13,620
55-59	24,440	13,021	11,419	25,023	13,329	11,694	25,338	13,477	11,861
60-64	17,978	9,447	8,531	18,908	9,927	8,981	19,844	10,425	9,419
65-69	12,636	6,572	6,064	12,936	6,747	6,189	13,443	7,012	6,431
70-74	10,054	5,065	4,989	10,192	5,122	5,070	10,238	5,153	5,085
75-79	6,488	3,323	3,165	6,594	3,368	3,226	6,759	3,430	3,329
80+	6,189	3,084	3,105	6,375	3,180	3,195	6,543	3,270	3,273
Total	745,153	387,520	357,633	757,042	393,324	363,718	768,577	398,948	369,629

Table 14: Projected population (numbers) and percent distribution by age and sex, Bhutan 2015

Age	Persons			Percentage		
	Male	Female	Both sex	Male	Female	Both sex
0-4	41,693	41,023	82,716	10.6	11.3	10.9
5-9	40,533	39,803	80,336	10.3	10.9	10.6
10-14	31,097	30,588	61,685	7.9	8.4	8.1
15-19	35,253	34,569	69,822	9.0	9.5	9.2
20-24	38,303	37,896	76,199	9.7	10.4	10.1
25-29	36,963	37,233	74,196	9.4	10.2	9.8
30-34	39,547	29,811	69,358	10.1	8.2	9.2
35-39	30,689	25,411	56,100	7.8	7.0	7.4
40-44	22,491	19,035	41,526	5.7	5.2	5.5
45-49	20,163	16,906	37,069	5.1	4.6	4.9
50-54	14,919	13,088	28,007	3.8	3.6	3.7
55-59	13,329	11,694	25,023	3.4	3.2	3.3
60-64	9,927	8,981	18,908	2.5	2.5	2.5
65-69	6,747	6,189	12,936	1.7	1.7	1.7
70-74	5,122	5,070	10,192	1.3	1.4	1.3
75-79	3,368	3,226	6,594	0.9	0.9	0.9
80+	3,180	3,195	6,375	0.8	0.9	0.8
All ages	393,324	363,718	757,042	100.0	100.0	100.0

Table 15: Projected population (numbers) by sex and single years of age, Bhutan 2015

Age	Male	Female	Both sex	Age	Male	Female	Both sex	Age	Male	Female	Both sex
0	8,334	8,198	16,532	27	7,243	7,564	14,807	54	2,786	2,461	5,247
1	8,242	8,114	16,356	28	7,383	7,309	14,692	55	2,793	2,452	5,245
2	8,273	8,143	16,416	29	7,631	6,962	14,593	56	2,774	2,426	5,200
3	8,369	8,235	16,604	30	7,922	6,560	14,482	57	2,717	2,375	5,092
4	8,475	8,333	16,808	31	8,122	6,176	14,298	58	2,602	2,281	4,883
5	8,530	8,381	16,911	32	8,139	5,864	14,003	59	2,443	2,160	4,603
6	8,480	8,325	16,805	33	7,897	5,665	13,562	60	2,278	2,035	4,313
7	8,275	8,123	16,398	34	7,467	5,546	13,013	61	2,128	1,920	4,048
8	7,891	7,747	15,638	35	6,981	5,456	12,437	62	1,980	1,799	3,779
9	7,357	7,227	14,584	36	6,532	5,333	11,865	63	1,838	1,675	3,513
10	6,756	6,643	13,399	37	6,098	5,154	11,252	64	1,703	1,552	3,255
11	6,226	6,129	12,355	38	5,711	4,892	10,603	65	1,565	1,422	2,987
12	5,928	5,837	11,765	39	5,367	4,576	9,943	66	1,432	1,298	2,730
13	5,957	5,860	11,817	40	5,003	4,238	9,241	67	1,322	1,204	2,526
14	6,230	6,119	12,349	41	4,643	3,937	8,580	68	1,242	1,147	2,389
15	6,573	6,445	13,018	42	4,382	3,712	8,094	69	1,186	1,118	2,304
16	6,861	6,723	13,584	43	4,250	3,595	7,845	70	1,139	1,098	2,237
17	7,117	6,971	14,088	44	4,213	3,553	7,766	71	1,090	1,073	2,163
18	7,294	7,153	14,447	45	4,227	3,547	7,774	72	1,034	1,032	2,066
19	7,408	7,277	14,685	46	4,218	3,520	7,738	73	967	971	1,938
20	7,541	7,394	14,935	47	4,132	3,445	7,577	74	892	896	1,788
21	7,687	7,519	15,206	48	3,933	3,296	7,229	75	813	810	1,623
22	7,754	7,614	15,368	49	3,653	3,098	6,751	76	735	722	1,457
23	7,716	7,674	15,390	50	3,349	2,883	6,232	77	663	635	1,298
24	7,605	7,695	15,300	51	3,086	2,698	5,784	78	601	559	1,160
25	7,430	7,710	15,140	52	2,894	2,559	5,453	79	556	500	1,056
26	7,276	7,688	14,964	53	2,804	2,487	5,291	80 +	3,180	3,195	6,375
Sub total	201,585	199,277	400,862	Sub total	147,280	123,625	270,905	Sub total	44,459	40,816	85,275
								Total	393,324	363,718	757,042

Table 16: Projected population (numbers) by age group and sex, Bhutan 2017 - 2019

Age group	2017			2018			2019		
	Total	Male	Female	Total	Male	Female	Total	Male	Female
0-4	80,944	40,804	40,140	79,405	40,032	39,373	77,429	39,040	38,389
5-9	81,877	41,310	40,567	82,279	41,513	40,766	82,373	41,561	40,812
10-14	67,250	33,765	33,485	70,890	35,561	35,329	75,152	37,749	37,403
15-19	66,693	33,839	32,854	65,126	33,096	32,030	63,434	32,190	31,244
20-24	74,212	37,432	36,780	72,716	36,666	36,050	71,100	35,849	35,251
25-29	75,395	37,162	38,233	75,864	37,625	38,239	76,021	37,991	38,030
30-34	71,824	39,063	32,761	72,518	38,113	34,405	73,081	37,219	35,862
35-39	61,841	34,808	27,033	64,448	36,763	27,685	66,743	38,272	28,471
40-44	46,139	24,922	21,217	49,135	26,548	22,587	52,257	28,344	23,913
45-49	38,313	20,814	17,499	38,653	20,960	17,693	39,326	21,288	18,038
50-54	30,933	16,607	14,326	32,802	17,693	15,109	34,508	18,677	15,831
55-59	25,441	13,499	11,942	25,520	13,509	12,011	25,832	13,660	12,172
60-64	20,794	10,940	9,854	21,686	11,428	10,258	22,435	11,834	10,601
65-69	14,118	7,351	6,767	14,911	7,743	7,168	15,754	8,165	7,589
70-74	10,226	5,171	5,055	10,229	5,205	5,024	10,339	5,289	5,050
75-79	6,966	3,504	3,462	7,178	3,579	3,599	7,352	3,643	3,709
80+	6,700	3,356	3,344	6,855	3,440	3,415	7,018	3,522	3,496
Total	779,666	404,347	375,319	790,215	409,474	380,741	800,154	414,293	385,861

Table 17: Projected population (numbers) by age group and sex, Bhutan 2020 - 2022

Age group	2020			2021			2022		
	Total	Male	Female	Total	Male	Female	Total	Male	Female
0-4	75,031	37,835	37,196	72,746	36,686	36,060	70,635	35,623	35,012
5-9	82,115	41,432	40,683	81,469	41,108	40,361	80,400	40,571	39,829
10-14	80,105	40,419	39,686	80,987	40,864	40,123	81,657	41,202	40,455
15-19	61,477	30,987	30,490	63,982	32,183	31,799	67,039	33,654	33,385
20-24	69,490	35,074	34,416	67,921	34,360	33,561	66,394	33,677	32,717
25-29	75,742	38,063	37,679	74,979	37,780	37,199	73,794	37,212	36,582
30-34	73,640	36,681	36,959	74,253	36,609	37,644	74,862	36,896	37,966
35-39	68,657	39,140	29,517	70,118	39,244	30,874	71,137	38,682	32,455
40-44	55,288	30,227	25,061	58,193	32,228	25,965	60,988	34,311	26,677
45-49	40,622	21,967	18,655	42,617	23,018	19,599	45,181	24,369	20,812
50-54	35,820	19,419	16,401	36,628	19,857	16,771	37,063	20,070	16,993
55-59	26,546	14,053	12,493	27,754	14,742	13,012	29,376	15,678	13,698
60-64	22,994	12,127	10,867	23,309	12,275	11,034	23,427	12,308	11,119
65-69	16,596	8,595	8,001	17,446	9,042	8,404	18,308	9,504	8,804
70-74	10,615	5,445	5,170	11,060	5,673	5,387	11,642	5,961	5,681
75-79	7,466	3,691	3,775	7,512	3,721	3,791	7,517	3,742	3,775
80+	7,193	3,605	3,588	7,396	3,695	3,701	7,618	3,790	3,828
Total	809,397	418,760	390,637	818,370	423,085	395,285	827,038	427,250	399,788

Table 18: Projected population (numbers) and percent distribution by age group and sex, Bhutan 2020

Age	Persons			Percentage		
	Male	Female	Both sex	Male	Female	Both sex
0-4	37,835	37,196	75,031	9.0	9.5	9.3
5-9	41,432	40,683	82,115	9.9	10.4	10.1
10-14	40,419	39,686	80,105	9.7	10.2	9.9
15-19	30,987	30,490	61,477	7.4	7.8	7.6
20-24	35,074	34,416	69,490	8.4	8.8	8.6
25-29	38,063	37,679	75,742	9.1	9.6	9.4
30-34	36,681	36,959	73,640	8.8	9.5	9.1
35-39	39,140	29,517	68,657	9.3	7.6	8.5
40-44	30,227	25,061	55,288	7.2	6.4	6.8
45-49	21,967	18,655	40,622	5.2	4.8	5.0
50-54	19,419	16,401	35,820	4.6	4.2	4.4
55-59	14,053	12,493	26,546	3.4	3.2	3.3
60-64	12,127	10,867	22,994	2.9	2.8	2.8
65-69	8,595	8,001	16,596	2.1	2.0	2.1
70-74	5,445	5,170	10,615	1.3	1.3	1.3
75-79	3,691	3,775	7,466	0.9	1.0	0.9
80+	3,605	3,588	7,193	0.9	0.9	0.9
All ages	418,760	390,637	809,397	100.0	100.0	100.0

Table 19: Projected population (numbers) by sex and single years of age, Bhutan 2020

Age	Male	Female	Both sex	Age	Male	Female	Both sex	Age	Male	Female	Both sex	
0	6,457	6,361	12,818	27	7,705	7,570	15,275	54	3,495	2,990	6,485	
1	7,264	7,145	14,409	28	7,665	7,628	15,293	55	3,189	2,775	5,964	
2	7,790	7,656	15,446	29	7,555	7,647	15,202	56	2,925	2,587	5,512	
3	8,093	7,950	16,043	30	7,379	7,659	15,038	57	2,727	2,443	5,170	
4	8,231	8,084	16,315	31	7,224	7,634	14,858	58	2,623	2,362	4,985	
5	8,266	8,118	16,384	32	7,189	7,508	14,697	59	2,589	2,326	4,915	
6	8,257	8,107	16,364	33	7,323	7,253	14,576	60	2,577	2,305	4,882	
7	8,251	8,103	16,354	34	7,566	6,905	14,471	61	2,543	2,269	4,812	
8	8,289	8,139	16,428	35	7,850	6,503	14,353	62	2,473	2,208	4,681	
9	8,369	8,216	16,585	36	8,044	6,120	14,164	63	2,349	2,107	4,456	
10	8,449	8,293	16,742	37	8,055	5,806	13,861	64	2,185	1,978	4,163	
11	8,450	8,295	16,745	38	7,812	5,605	13,417	65	2,015	1,847	3,862	
12	8,280	8,128	16,408	39	7,379	5,483	12,862	66	1,862	1,725	3,587	
13	7,888	7,746	15,634	40	6,892	5,390	12,282	67	1,711	1,601	3,312	
14	7,352	7,224	14,576	41	6,441	5,264	11,705	68	1,569	1,475	3,044	
15	6,737	6,626	13,363	42	6,005	5,083	11,088	69	1,438	1,353	2,791	
16	6,206	6,111	12,317	43	5,617	4,820	10,437	70	1,312	1,235	2,547	
17	5,906	5,817	11,723	44	5,272	4,504	9,776	71	1,194	1,123	2,317	
18	5,934	5,840	11,774	45	4,908	4,166	9,074	72	1,080	1,022	2,102	
19	6,204	6,096	12,300	46	4,545	3,865	8,410	73	976	933	1,909	
20	6,543	6,420	12,963	47	4,280	3,639	7,919	74	883	857	1,740	
21	6,829	6,695	13,524	48	4,141	3,516	7,657	75	805	797	1,602	
22	7,080	6,940	14,020	49	4,093	3,469	7,562	76	746	756	1,502	
23	7,255	7,119	14,374	50	4,095	3,456	7,551	77	711	733	1,444	
24	7,367	7,242	14,609	51	4,074	3,422	7,496	78	702	733	1,435	
25	7,497	7,356	14,853	52	3,980	3,342	7,322	79	727	756	1,483	
26	7,641	7,478	15,119	53	3,775	3,191	6,966	80 +	3,605	3,588	7,193	
Sub total	200,885	197,305	398,190	Sub total	166,864	146,448	313,312	Sub total	51,011	46,884	97,895	
									Total	418,760	390,637	809,397

Table 20: Projected population (numbers) by age group and sex, Bhutan 2023 - 2025

Age group	2023			2024			2025		
	Total	Male	Female	Total	Male	Female	Total	Male	Female
0-4	68,763	34,679	34,084	67,192	33,887	33,305	65,982	33,276	32,706
5-9	78,894	39,814	39,080	76,946	38,834	38,112	74,575	37,641	36,934
10-14	82,065	41,408	40,657	82,163	41,458	40,705	81,911	41,331	40,580
15-19	70,676	35,449	35,227	74,929	37,632	37,297	79,870	40,295	39,575
20-24	64,843	32,943	31,900	63,165	32,044	31,121	61,222	30,849	30,373
25-29	72,317	36,457	35,860	70,720	35,649	35,071	69,126	34,882	34,244
30-34	75,343	37,363	37,980	75,511	37,733	37,778	75,244	37,809	37,435
35-39	71,841	37,750	34,091	72,414	36,872	35,542	72,983	36,347	36,636
40-44	63,577	36,249	27,328	65,858	37,747	28,111	67,761	38,610	29,151
45-49	48,135	25,971	22,164	51,211	27,739	23,472	54,197	29,592	24,605
50-54	37,414	20,224	17,190	38,087	20,553	17,534	39,366	21,222	18,144
55-59	31,172	16,716	14,456	32,810	17,655	15,155	34,072	18,365	15,707
60-64	23,525	12,331	11,194	23,841	12,485	11,356	24,529	12,862	11,667
65-69	19,117	9,941	9,176	19,799	10,306	9,493	20,311	10,572	9,739
70-74	12,320	6,292	6,028	13,038	6,646	6,392	13,756	7,008	6,748
75-79	7,538	3,776	3,762	7,642	3,848	3,794	7,869	3,973	3,896
80+	7,839	3,884	3,955	8,037	3,970	4,067	8,202	4,045	4,157
Total	835,379	431,247	404,132	843,363	435,058	408,305	850,976	438,679	412,297

Table 21: Projected population (numbers) and percentage distribution by age and sex, Bhutan 2025

Age	Persons			Percentage		
	Male	Female	Both sex	Male	Female	Both sex
0-4	33,276	32,706	65,982	7.6	7.9	7.8
5-9	37,641	36,934	74,575	8.6	9.0	8.8
10-14	41,331	40,580	81,911	9.4	9.8	9.6
15-19	40,295	39,575	79,870	9.2	9.6	9.4
20-24	30,849	30,373	61,222	7.0	7.4	7.2
25-29	34,882	34,244	69,126	8.0	8.3	8.1
30-34	37,809	37,435	75,244	8.6	9.1	8.8
35-39	36,347	36,636	72,983	8.3	8.9	8.6
40-44	38,610	29,151	67,761	8.8	7.1	8.0
45-49	29,592	24,605	54,197	6.7	6.0	6.4
50-54	21,222	18,144	39,366	4.8	4.4	4.6
55-59	18,365	15,707	34,072	4.2	3.8	4.0
60-64	12,862	11,667	24,529	2.9	2.8	2.9
65-69	10,572	9,739	20,311	2.4	2.4	2.4
70-74	7,008	6,748	13,756	1.6	1.6	1.6
75-79	3,973	3,896	7,869	0.9	0.9	0.9
80+	4,045	4,157	8,202	0.9	1.0	1.0
All ages	438,679	412,297	850,976	100.0	100.0	100.0

Table 22: Projected population (numbers) by sex and single years of age, Bhutan 2025

Age	Male	Female	Both sex	Age	Male	Female	Both sex	Age	Male	Female	Both sex
0	6,399	6,297	12,696	27	7,042	6,906	13,948	54	3,922	3,355	7,277
1	6,501	6,393	12,894	28	7,214	7,082	14,296	55	3,907	3,332	7,239
2	6,631	6,518	13,149	29	7,324	7,202	14,526	56	3,869	3,288	7,157
3	6,786	6,666	13,452	30	7,452	7,313	14,765	57	3,764	3,201	6,965
4	6,959	6,832	13,791	31	7,592	7,433	15,025	58	3,554	3,045	6,599
5	7,145	7,012	14,157	32	7,654	7,522	15,176	59	3,271	2,841	6,112
6	7,338	7,200	14,538	33	7,612	7,576	15,188	60	2,966	2,624	5,590
7	7,532	7,390	14,922	34	7,499	7,591	15,090	61	2,700	2,433	5,133
8	7,723	7,577	15,300	35	7,322	7,600	14,922	62	2,495	2,282	4,777
9	7,903	7,755	15,658	36	7,164	7,571	14,735	63	2,378	2,189	4,567
10	8,065	7,916	15,981	37	7,124	7,443	14,567	64	2,323	2,139	4,462
11	8,202	8,052	16,254	38	7,252	7,185	14,437	65	2,291	2,102	4,393
12	8,306	8,156	16,462	39	7,485	6,837	14,322	66	2,238	2,051	4,289
13	8,369	8,219	16,588	40	7,759	6,434	14,193	67	2,156	1,979	4,135
14	8,389	8,237	16,626	41	7,943	6,050	13,993	68	2,026	1,870	3,896
15	8,427	8,274	16,701	42	7,947	5,734	13,681	69	1,861	1,737	3,598
16	8,426	8,272	16,698	43	7,699	5,530	13,229	70	1,686	1,595	3,281
17	8,254	8,105	16,359	44	7,262	5,403	12,665	71	1,522	1,459	2,981
18	7,862	7,722	15,584	45	6,772	5,305	12,077	72	1,380	1,336	2,716
19	7,326	7,202	14,528	46	6,316	5,175	11,491	73	1,261	1,229	2,490
20	6,711	6,604	13,315	47	5,878	4,990	10,868	74	1,159	1,129	2,288
21	6,180	6,089	12,269	48	5,487	4,726	10,213	75	1,061	1,032	2,093
22	5,880	5,795	11,675	49	5,139	4,409	9,548	76	956	927	1,883
23	5,905	5,816	11,721	50	4,772	4,071	8,843	77	828	806	1,634
24	6,173	6,069	12,242	51	4,408	3,769	8,177	78	668	657	1,325
25	6,510	6,391	12,901	52	4,135	3,539	7,674	79	460	474	934
26	6,792	6,663	13,455	53	3,985	3,410	7,395	80 +	4,045	4,157	8,202
Sub total	196,694	193,222	389,916	Sub total	181,238	163,806	345,044	Sub total	60,747	55,269	116,016
								Total	438,679	412,297	850,976

Table 23: Projected population (numbers) by age group and sex, Bhutan 2026 - 2028

Age group	2026			2027			2028		
	Total	Male	Female	Total	Male	Female	Total	Male	Female
0-4	64,877	32,718	32,159	63,920	32,235	31,685	63,154	31,848	31,306
5-9	72,314	36,501	35,813	70,225	35,448	34,777	68,372	34,512	33,860
10-14	81,271	41,010	40,261	80,209	40,476	39,733	78,710	39,722	38,988
15-19	80,757	40,742	40,015	81,430	41,081	40,349	81,842	41,289	40,553
20-24	63,725	32,044	31,681	66,778	33,513	33,265	70,408	35,304	35,104
25-29	67,574	34,176	33,398	66,063	33,501	32,562	64,527	32,774	31,753
30-34	74,496	37,533	36,963	73,329	36,974	36,355	71,872	36,228	35,644
35-39	73,604	36,283	37,321	74,222	36,575	37,647	74,711	37,044	37,667
40-44	69,219	38,720	30,499	70,241	38,173	32,068	70,955	37,263	33,692
45-49	57,062	31,562	25,500	59,819	33,614	26,205	62,376	35,523	26,853
50-54	41,323	22,252	19,071	43,831	23,571	20,260	46,717	25,132	21,585
55-59	34,858	18,789	16,069	35,291	19,001	16,290	35,649	19,161	16,488
60-64	25,676	13,511	12,165	27,201	14,384	12,817	28,887	15,350	13,537
65-69	20,607	10,710	9,897	20,734	10,751	9,983	20,849	10,787	10,062
70-74	14,482	7,384	7,098	15,221	7,775	7,446	15,918	8,146	7,772
75-79	8,224	4,151	4,073	8,678	4,372	4,306	9,201	4,624	4,577
80+	8,341	4,114	4,227	8,470	4,182	4,288	8,611	4,258	4,353
Total	858,410	442,200	416,210	865,662	445,626	420,036	872,759	448,965	423,794

Table 24: Projected population (numbers) by age group and sex, Bhutan 2029 - 2030

Age group	2029			2030		
	Total	Male	Female	Total	Male	Female
0-4	62,612	31,574	31,038	62,326	31,429	30,897
5-9	66,819	33,727	33,092	65,627	33,124	32,503
10-14	76,772	38,747	38,025	74,410	37,558	36,852
15-19	81,945	41,341	40,604	81,700	41,218	40,482
20-24	74,651	37,481	37,170	79,580	40,136	39,444
25-29	62,864	31,883	30,981	60,938	30,698	30,240
30-34	70,295	35,431	34,864	68,722	34,674	34,048
35-39	74,890	37,417	37,473	74,640	37,499	37,141
40-44	71,540	36,406	35,134	72,121	35,898	36,223
45-49	64,633	37,001	27,632	66,521	37,857	28,664
50-54	49,722	26,856	22,866	52,644	28,665	23,979
55-59	36,320	19,490	16,830	37,570	20,143	17,427
60-64	30,426	16,225	14,201	31,614	16,887	14,727
65-69	21,161	10,940	10,221	21,807	11,290	10,517
70-74	16,506	8,456	8,050	16,954	8,685	8,269
75-79	9,754	4,893	4,861	10,306	5,168	5,138
80+	8,797	4,356	4,441	9,043	4,480	4,563
Total	879,707	452,224	427,483	886,523	455,409	431,114

Table 25: Projected population (numbers) and percent distribution by age group and sex, Bhutan 2030

Age	Persons			Percentage		
	Male	Female	Both sex	Male	Female	Both sex
0-4	31,429	30,897	62,326	6.9	7.2	7.0
5-9	33,124	32,503	65,627	7.3	7.5	7.4
10-14	37,558	36,852	74,410	8.2	8.5	8.4
15-19	41,218	40,482	81,700	9.1	9.4	9.2
20-24	40,136	39,444	79,580	8.8	9.1	9.0
25-29	30,698	30,240	60,938	6.7	7.0	6.9
30-34	34,674	34,048	68,722	7.6	7.9	7.8
35-39	37,499	37,141	74,640	8.2	8.6	8.4
40-44	35,898	36,223	72,121	7.9	8.4	8.1
45-49	37,857	28,664	66,521	8.3	6.6	7.5
50-54	28,665	23,979	52,644	6.3	5.6	5.9
55-59	20,143	17,427	37,570	4.4	4.0	4.2
60-64	16,887	14,727	31,614	3.7	3.4	3.6
65-69	11,290	10,517	21,807	2.5	2.4	2.5
70-74	8,685	8,269	16,954	1.9	1.9	1.9
75-79	5,168	5,138	10,306	1.1	1.2	1.2
80+	4,480	4,563	9,043	1.0	1.1	1.0
All ages	455,409	431,114	886,523	100.0	100.0	100.0

Table 26: Projected population(numbers) by sex and single years of age, Bhutan 2030

Age	Male	Female	Both sex	Age	Male	Female	Both sex	Age	Male	Female	Both sex
0	6,413	6,313	12,726	27	5,851	5,769	11,620	54	4,944	4,277	9,221
1	6,292	6,189	12,481	28	5,875	5,788	11,663	55	4,575	3,939	8,514
2	6,232	6,125	12,357	29	6,140	6,040	12,180	56	4,207	3,634	7,841
3	6,225	6,116	12,341	30	6,474	6,358	12,832	57	3,925	3,399	7,324
4	6,267	6,154	12,421	31	6,755	6,628	13,383	58	3,760	3,262	7,022
5	6,348	6,231	12,579	32	7,000	6,867	13,867	59	3,676	3,193	6,869
6	6,462	6,342	12,804	33	7,170	7,039	14,209	60	3,638	3,156	6,794
7	6,605	6,480	13,085	34	7,275	7,156	14,431	61	3,581	3,100	6,681
8	6,766	6,639	13,405	35	7,399	7,263	14,662	62	3,461	3,002	6,463
9	6,943	6,811	13,754	36	7,534	7,379	14,913	63	3,244	2,838	6,082
10	7,130	6,994	14,124	37	7,592	7,463	15,055	64	2,963	2,631	5,594
11	7,322	7,183	14,505	38	7,545	7,513	15,058	65	2,662	2,410	5,072
12	7,515	7,374	14,889	39	7,429	7,523	14,952	66	2,397	2,215	4,612
13	7,706	7,562	15,268	40	7,247	7,525	14,772	67	2,188	2,056	4,244
14	7,885	7,739	15,624	41	7,086	7,493	14,579	68	2,058	1,951	4,009
15	8,046	7,900	15,946	42	7,038	7,358	14,396	69	1,985	1,885	3,870
16	8,182	8,034	16,216	43	7,154	7,099	14,253	70	1,932	1,830	3,762
17	8,283	8,136	16,419	44	7,373	6,748	14,121	71	1,867	1,767	3,634
18	8,345	8,198	16,543	45	7,631	6,344	13,975	72	1,770	1,678	3,448
19	8,362	8,214	16,576	46	7,802	5,957	13,759	73	1,638	1,564	3,202
20	8,398	8,249	16,647	47	7,794	5,638	13,432	74	1,478	1,430	2,908
21	8,394	8,247	16,641	48	7,536	5,429	12,965	75	1,307	1,284	2,591
22	8,221	8,077	16,298	49	7,094	5,296	12,390	76	1,139	1,138	2,277
23	7,828	7,696	15,524	50	6,598	5,190	11,788	77	995	1,004	1,999
24	7,295	7,175	14,470	51	6,135	5,053	11,188	78	888	894	1,782
25	6,681	6,579	13,260	52	5,692	4,863	10,555	79	839	818	1,657
26	6,151	6,064	12,215	53	5,296	4,596	9,892	80 +	4,480	4,563	9,043
Sub total	196,297	192,821	389,118	Sub total	187,515	173,375	360,890	Sub total	71,597	64,918	136,515
								Grand total	455,409	431,114	886,523